

ALASKA NATIVE CLAIMS SETTLEMENT ACT
 (ANCSA) SECTION 14(c), LOTS 1 THROUGH 13
 (P.L. 92-203, 85 STAT. 688, 702, 703)
 UNALAKLEET NATIVE CORPORATION
 UNALAKLEET, ALASKA
 AND
 THE DEPENDENT RESURVEY
 OF A PORTION OF U.S. SURVEY NO. 5445
 AND
 THE RETRACEMENT OF PORTIONS OF
 U.S. SURVEY NOS. 5315, 5379, 5444, AND 5445

This plat contains the entire survey record.

U.S. Survey No. 4394 was surveyed by Edward A. Taylor, Supervisory Cadastral Surveyor, in 1964; U.S. Survey No. 5315 was surveyed by John E. S. Westoby and Gary J. Singler, Cadastral Surveyors, in 1975; U.S. Survey Nos. 5376, 5379, 5444, and 5445 were surveyed by Joseph F. Maestas, Jr., Cadastral Surveyor, in 1976; U.S. Survey No. 5450 was surveyed by Mason W. Thayer, Cadastral Surveyor, in 1977.

A portion of the Fourth Standard Parallel South along the south boundary of Township 16 South, through Range 11 West, a portion of the Fifth Standard Parallel South on the south boundary of Township 20 South through Range 11 West, a portion of the Second Guide Meridian West through Township 18 South between Ranges 8 and 9 West; and portions of the boundaries, portions of the subdivisional lines and meander lines of Township 16 South, Range 11 West, Townships 17 South, Ranges 10 and 11 West, Township 18 South, Range 9 West, Townships 19 South, Ranges 9 and 10 West, Township 20 South, Range 11 West, Township 21 South, Range 12 West, Kateel River Meridian, were surveyed by Malcolm A. Menzies, Alaska Registered Land Surveyor for R&M Consultants, Inc., in 1975.

The meanders in Township 17 South, Range 12 West, Township 18 South, Range 10 West, and Township 19 South, Range 11 West, Kateel River Meridian, were prepared under Special Instructions for Group No. 225, Alaska, and accepted in 1980.

Prior to the execution of this survey the present meanders of Lots 1 through 13 were investigated and were found to be substantially the same as the existing record.

This survey was executed by Michael D. Wilson, Cadastral Surveyor, June 27, 1988 through September 27, 1991, in accordance with the principles set forth in the Manual of Surveying Instructions, 1973, Special Instructions approved April 6, 1988, Amended Special Instructions approved March 23, 1990, the Unalakleet ANCSA 14(c) Map of Boundaries approved June 4, 1987, and Assignment Instructions dated May 18, 1988.

Field assistants were:
 Jerry B. Lewis, Land Surveyor
 James W. Hawke, Jr., Land Surveyor
 Robin T. Mathews, Student Trainee (LS)
 Karl W. Harder, Surveying Technician
 Robert M. Devine, Surveying Technician

Area: 204.59 Acres.

The azimuth was obtained from direct observations of the sun, using the altitude and hour angle methods, and refers to the true meridian.

The geographic position of the witness corner to corner No. 4, Lot 1, a meander corner, as determined from a tie to National Geodetic Survey control station "FLAT POINT," is:

Latitude: 63° 37' 38.54" North
 Longitude: 160° 56' 56.50" West
 NAD 27

The mean magnetic declination was observed during the execution of this survey.

The land varies between the Lots. Lots 2, 3, 9, and 10 are generally level with little to no brush. Lots 5, 6, 8, 10, 11, and 13 are generally level with scattered trees, willow, alder, and ground birch. Lots 5 and 6 support scattered cottonwood, while Lots 8, 10, 11, and 13 support scattered spruce. Lots 1, 4, and 7 are moderately sloping supporting alder and willow with scattered spruce in Lots 4 and 7.

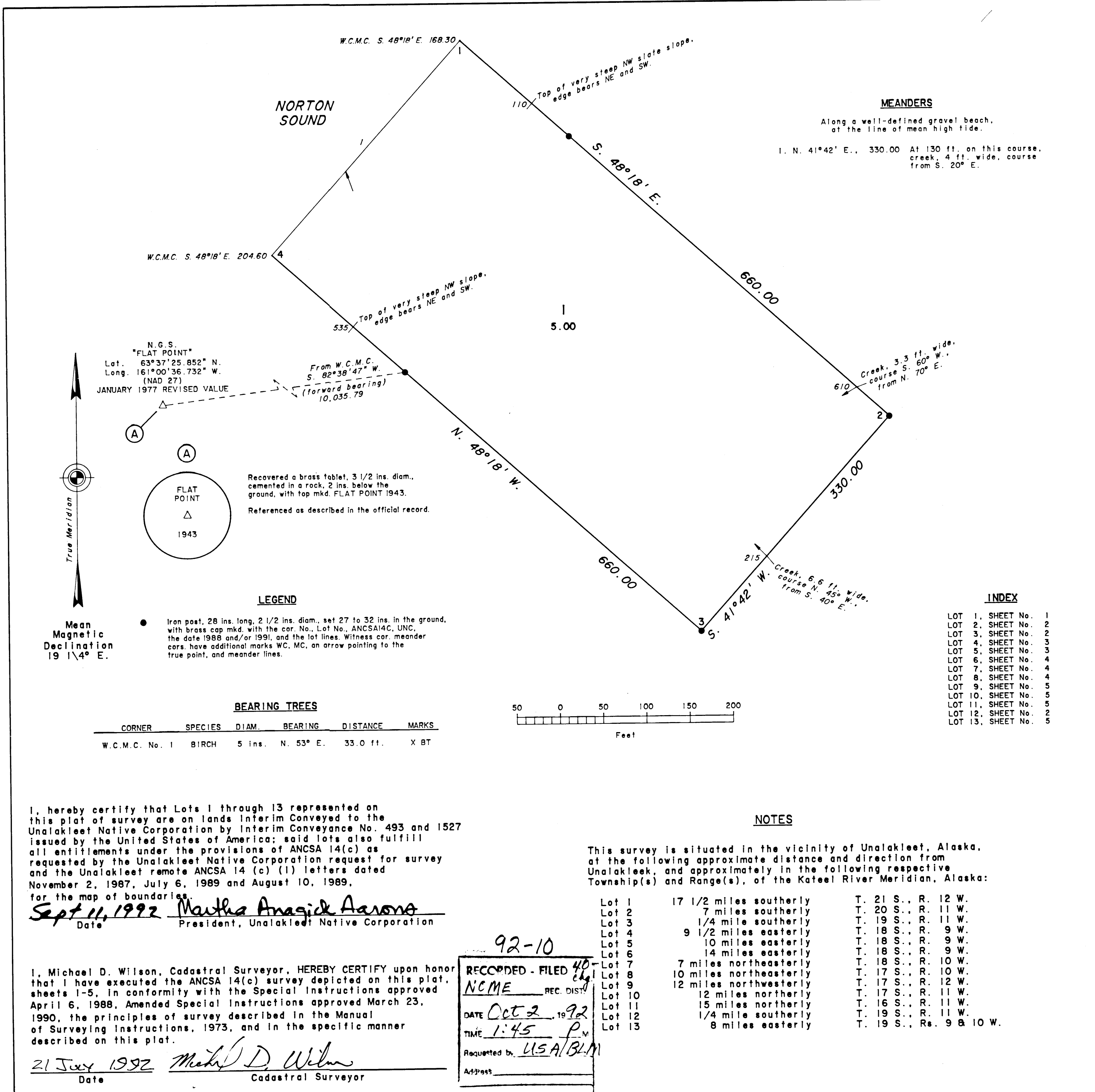
UNITED STATES DEPARTMENT OF THE INTERIOR
 BUREAU OF LAND MANAGEMENT
 Anchorage, Alaska

The survey represented by this plat, sheets 1-5, having been properly executed and examined, is hereby accepted for having fulfilled the requirements of Section 14(c) of the Alaska Native Claims Settlement Act.

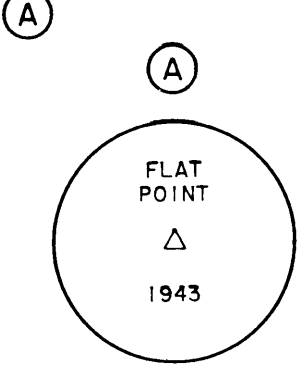
For the Director

George J. Smith 25 Sept. 1992
 Date

Deputy State Director for Cadastral Survey, Alaska



N.G.S. "FLAT POINT"
 Lat. 63° 37' 25.852" N.
 Long. 161° 00' 36.732" W.
 (NAD 27)
 JANUARY 1977 REVISED VALUE



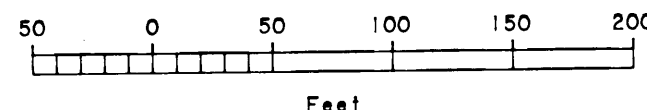
Recovered a brass tablet, 3 1/2 ins. diam., cemented in a rock, 2 ins. below the ground, with top mkd. FLAT POINT 1943. Referenced as described in the official record.

LEGEND

● Iron post, 28 ins. long, 2 1/2 ins. diam., set 27 to 32 ins. in the ground, with brass cap mkd. with the cor. No., Lot No., ANCSA 14C, UNC, the date 1988 and/or 1991, and the lot lines. Witness cor. meander cors. have additional marks WC, MC, an arrow pointing to the true point, and meander lines.

BEARING TREES

CORNER	SPECIES	DIAM.	BEARING	DISTANCE	MARKS
W.C.M.C. No. 1	BIRCH	5 ins.	N. 53° E.	33.0 ft.	X BT



I, hereby certify that Lots 1 through 13 represented on this plat of survey are on lands Interim Conveyed to the Unalakleet Native Corporation by Interim Conveyance No. 493 and 1527 issued by the United States of America; said lots also fulfill all entitlements under the provisions of ANCSA 14(c) as requested by the Unalakleet Native Corporation request for survey and the Unalakleet remote ANCSA 14 (c) (1) letters dated November 2, 1987, July 6, 1989 and August 10, 1989, for the map of boundaries.

Sept 11, 1992 *Martha Anagik Aarons*
 Date President, Unalakleet Native Corporation

I, Michael D. Wilson, Cadastral Surveyor, HEREBY CERTIFY upon honor that I have executed the ANCSA 14(c) survey depicted on this plat, sheets 1-5, in conformity with the Special Instructions approved April 6, 1988, Amended Special Instructions approved March 23, 1990, the principles of survey described in the Manual of Surveying Instructions, 1973, and in the specific manner described on this plat.

21 July 1992 *Michael D. Wilson*
 Date Cadastral Surveyor

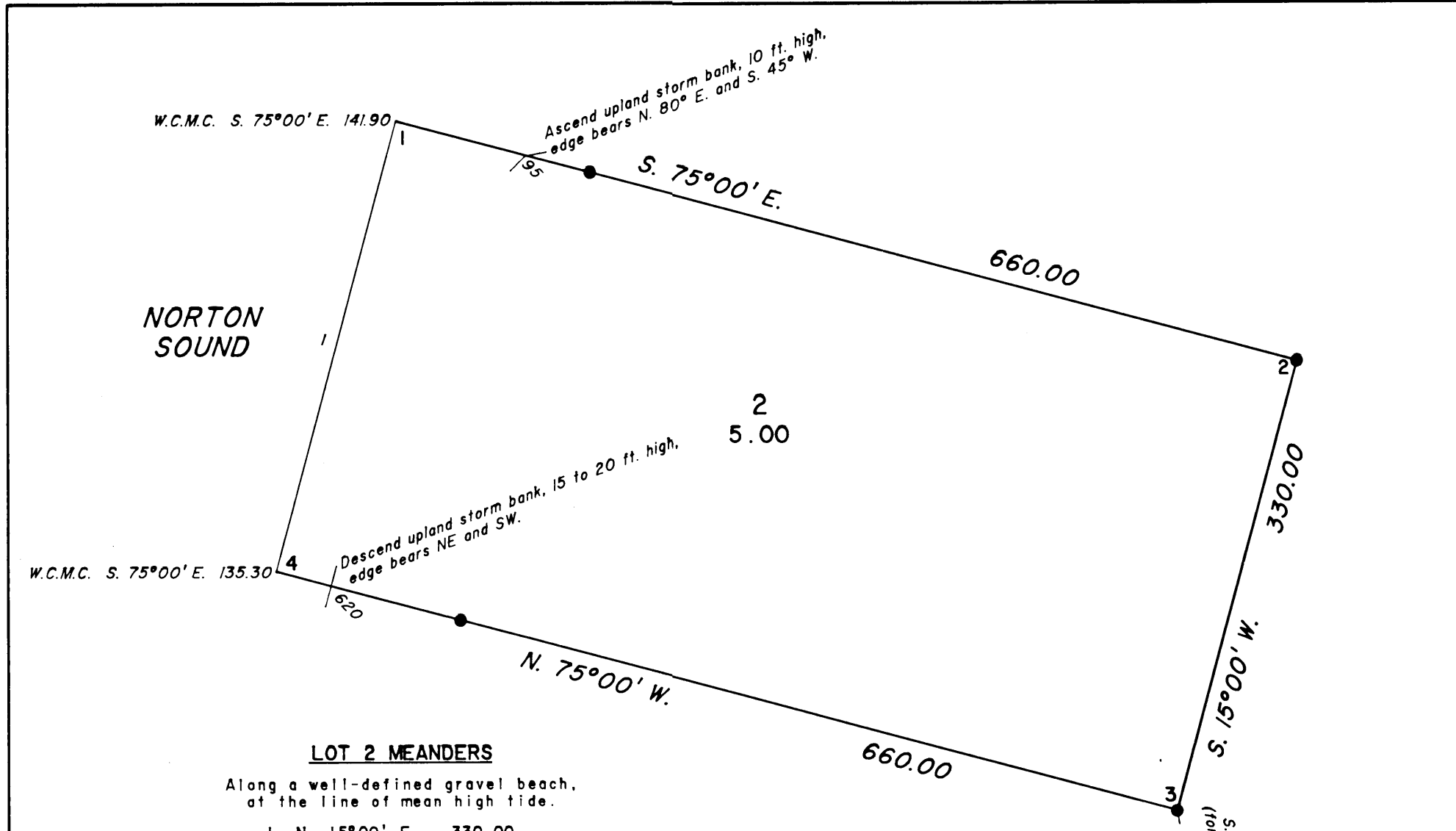
92-10
 RECORDED - FILED 40
 NCME REC. DIST.
 DATE Oct 2 1992
 TIME 1:45 P.M.
 Requested by USA/BLM
 Address

NOTES
 This survey is situated in the vicinity of Unalakleet, Alaska, at the following approximate distance and direction from Unalakleet, and approximately in the following respective Township(s) and Range(s), of the Kateel River Meridian, Alaska:

Lot 1	17 1/2 miles southerly	T. 21 S., R. 12 W.
Lot 2	7 miles southerly	T. 20 S., R. 11 W.
Lot 3	1/4 mile southerly	T. 19 S., R. 11 W.
Lot 4	9 1/2 miles easterly	T. 18 S., R. 9 W.
Lot 5	10 miles easterly	T. 18 S., R. 9 W.
Lot 6	14 miles easterly	T. 18 S., R. 9 W.
Lot 7	7 miles northeasterly	T. 18 S., R. 10 W.
Lot 8	10 miles northeasterly	T. 17 S., R. 10 W.
Lot 9	12 miles northwesterly	T. 17 S., R. 12 W.
Lot 10	12 miles northerly	T. 17 S., R. 11 W.
Lot 11	15 miles northerly	T. 16 S., R. 11 W.
Lot 12	1/4 mile southerly	T. 19 S., R. 11 W.
Lot 13	8 miles easterly	T. 19 S., Rs. 9 & 10 W.

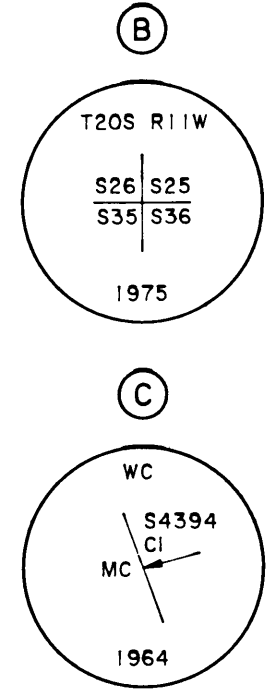
ALASKA NATIVE CLAIMS SETTLEMENT ACT
(ANCSA) SECTION 14(c), LOTS 1 THROUGH 13
(P.L. 92-203, 85 STAT. 688, 702, 703)
UNALAKLEET NATIVE CORPORATION
UNALAKLEET, ALASKA

REFERENCE SHOULD BE MADE
TO
SHEET No. 1
FOR SURVEY INFORMATION



LOT 2 MEANDERS
Along a well-defined gravel beach,
at the line of mean high tide.
1. N. 15°00' E., 330.00

NOTE
From the true point for cor. No. 1, Lot 2, a
meander cor., the splayed mouth of Jesse Creek,
33 ft. wide, bears N. 15° E., 280 ft. dist., course
from S. 65° E.



B
Recovered an iron post, 2 1/2 ins. diam., firmly
set, projecting 6 ins. above ground, with brass
cap mkd. as shown

C
Recovered an iron post, 2 1/2 ins. diam., firmly
set, 10 ins. below the ground, with brass cap
mkd. as shown, from which the original
improvements

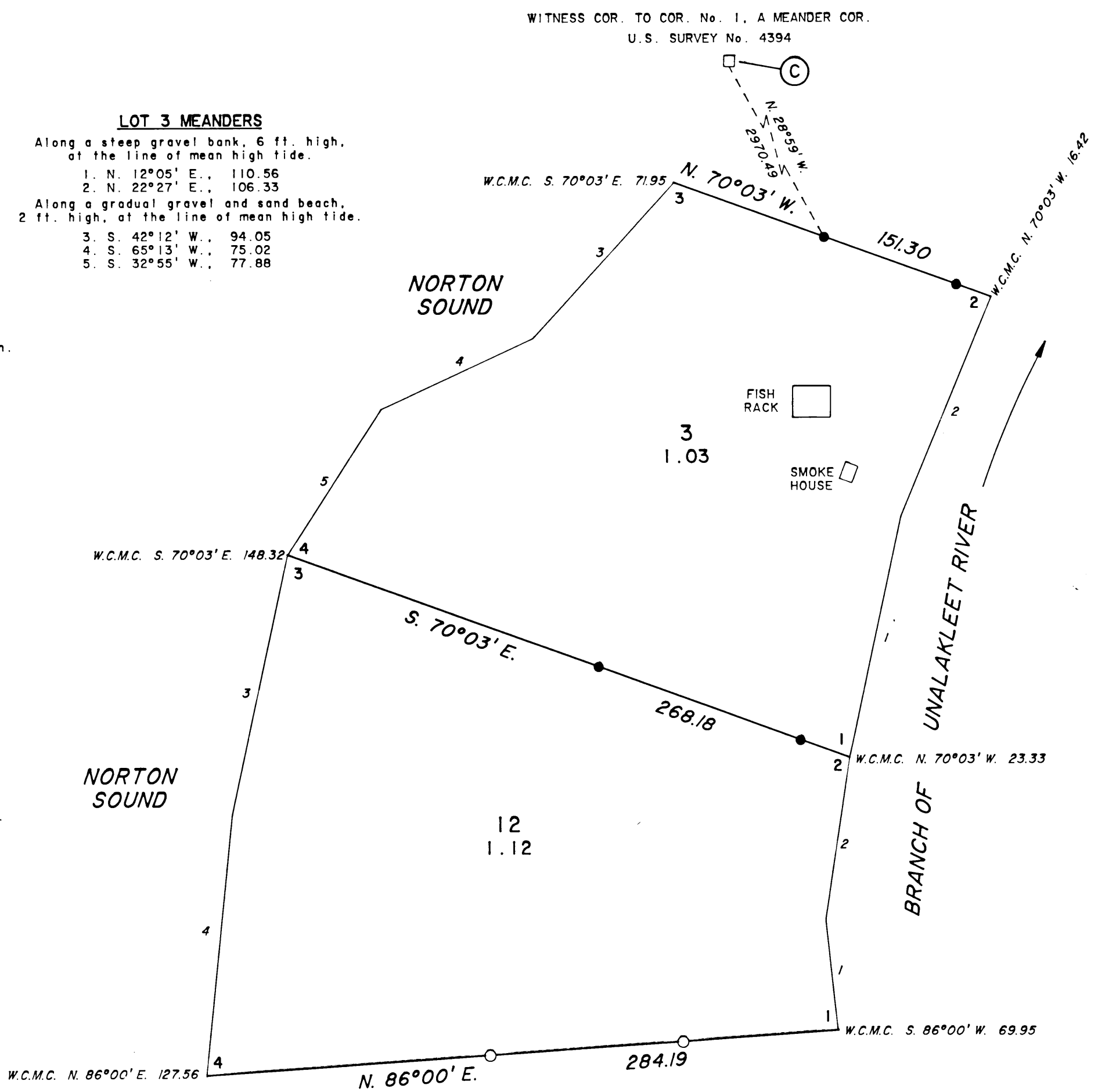
The SW cor. of a frame building, 36 x 48 ft.,
bears N. 32°35' E., 347.82 ft. dist., long side
extends N. 9° W., (Record, N. 35°43' E.,
342.54 ft. dist.)

The SE cor. of a frame building, 21 x 23 ft.,
bears N. 42°42' E., 161.70 ft. dist., long side
extends S. 82° W., (Record, N. 45°21' E.,
157.74 ft. dist.)

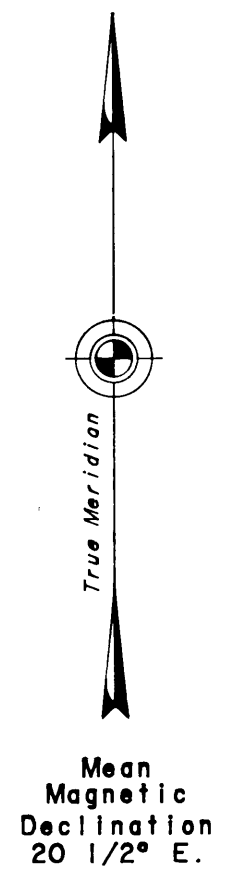
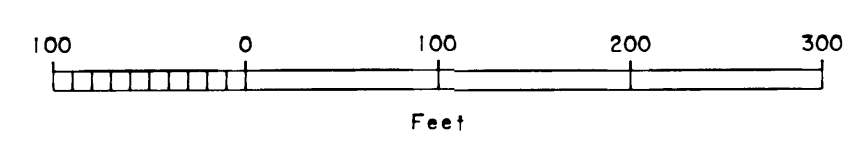
The SW face of the most SW tank of a group of 6,
as described in the official record, bears
N. 53° E., 85.80 ft. dist.

LOT 3 MEANDERS
Along a steep gravel bank, 6 ft. high,
at the line of mean high tide.
1. N. 12°05' E., 110.56
2. N. 22°27' E., 106.33
Along a gradual gravel and sand beach,
2 ft. high, at the line of mean high tide.
3. S. 42°12' W., 94.05
4. S. 65°13' W., 75.02
5. S. 32°55' W., 77.88

Cor. of secs. 25, 26, 35, and 36,
T. 20 S., R. 11 W., Koteel River Meridian.



WITNESS COR. TO COR. No. 1, A MEANDER COR.
U.S. SURVEY No. 4394

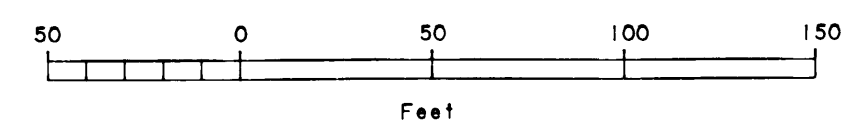


LOT 3 IMPROVEMENTS
From the witness cor. to cor. No. 1, Lot 3, a meander cor.
The SE cor. of a fishrack, 14 x 17 ft.,
bears N. 5°27' E., 145.39 ft. dist., long side
bears West.
The SE cor. of a smokehouse, 6 x 8 ft.,
bears N. 11°28' E., 117.48 ft. dist., long side
bears N. 20° E.

LOT 12 MEANDERS
Along a steep gravel bank, 6 ft. high,
at the line of mean high tide.
1. N. 6°19' W., 50.13
2. N. 8°36' E., 73.43
Along a gradual gravel and sand beach,
2 ft. high, at the line of mean high tide.
3. S. 12°09' W., 119.08
4. S. 5°44' W., 117.93

LEGEND

- Iron post, 28 ins. long, 2 1/2 ins. diam., set 27 to 32 ins. in the ground,
with brass cap mkd. with the cor. No., Lot No., ANCSA14C, UNC,
the date 1988 and/or 1991, and the lot lines. Witness cor. meander
cors. have additional marks WC, MC, an arrow pointing to the
true point, and meander lines.
- Stainless steel post, 28 ins. long, 2 1/2 ins. diam., set flush with the ground,
with brass cap mkd. with the cor. No., Lot No., ANCSA14C, UNC,
the date 1991, and the lot lines. Witness cor. meander cors. have
additional marks WC, MC, an arrow pointing to the true point, and
meander lines.
- Recovered monument.



ALASKA NATIVE CLAIMS SETTLEMENT ACT
(ANCSA) SECTION 14(c), LOTS 1 THROUGH 13
(P.L. 92-203, 85 STAT. 688, 702, 703)
UNALAKLEET NATIVE CORPORATION
UNALAKLEET, ALASKA

REFERENCE SHOULD BE MADE TO SHEET No. 1 FOR SURVEY INFORMATION

LOT 4 MEANDERS

Along a well-defined escarped bank, 5 to 10 ft. high, at the line of ordinary high water.

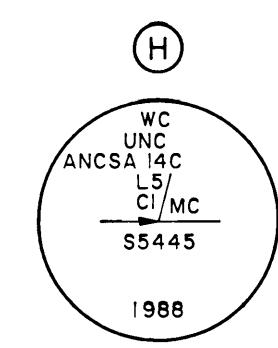
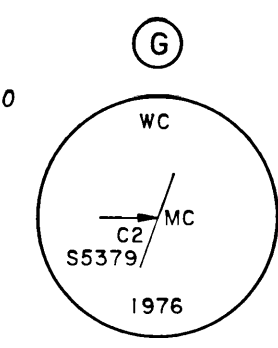
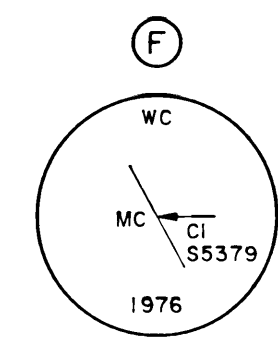
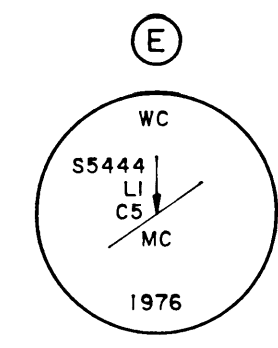
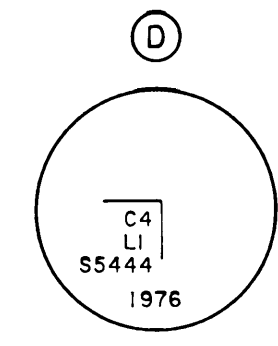
1. N. 31°24' W., 411.18
 2. N. 47°05' W., 592.02
 3. N. 63°20' W., 295.68
 4. N. 48°26' W., 208.56
 5. N. 63°39' W., 275.88
 6. N. 89°13' W., 104.94
 7. S. 56°27' W., 34.32
- At 175 ft. on this course, creek, 10 ft. wide, course from N. 30° E.
At end of course, creek, 5.3 ft. wide, course from N. 20° E.

LOT 4 IMPROVEMENTS

From the witness cor. to cor. No. 1, Lot 4, identical with the witness cor. to cor. No. 5, Lot 1, U.S. Survey No. 5444, both meander cors.

The most northerly cor. of a tent frame, 12 x 12 ft., bears S. 54°53' E., 1,635.31 ft. dist., long side bears S. 40° E.

The SW cor. of a log cabin, 12 x 29 ft., bears S. 55°25' E., 1,669.43 ft. dist., long side bears N. 15° E.



Recovered an alum. post, 2 1/2 ins. diam., loosely set, projecting 6 ins. above the ground, with alum. cap mkd. as shown, from which the original bearing tree

A spruce, 6 ins. diam., bears N. 40° E., 25.7 ft. dist., mkd. X BT on partially healed blazes.

Reset post flush with the ground.

Recovered an iron post, 2 1/2 ins. diam., firmly set, projecting 5 ins. above the ground, with brass cap mkd. as shown, from which the original bearing trees

A birch, 6 ins. diam., bears N. 27° E., 5.3 ft. dist., mkd. X BT in the bark.

A birch, 6 ins. diam., bears S. 46° W., 29.0 ft. dist., mkd. X BT in the bark.

The original tent frame has been moved.

Recovered an iron post, 2 1/2 ins. diam., firmly set, projecting 6 ins. above the ground, with brass cap mkd. as shown, from which the original bearing trees

A spruce, 18 ins. diam., bears N. 51 3/4° E., 23.1 ft. dist., mkd. X BT on partially healed blazes.

A spruce, 14 ins. diam., bears S. 50 3/4° E., 23.1 ft. dist., mkd. X BT on partially healed blazes.

Recovered an iron post, 2 1/2 ins. diam., firmly set, projecting 5 ins. above the ground, with brass cap mkd. as shown, from which the original bearing trees

A spruce, 14 ins. diam., bears S. 22 1/2° W., 28.4 ft. dist., mkd. X BT on partially healed blazes.

A spruce, 12 ins. diam., bears N. 50° W., 7.3 ft. dist., mkd. X BT on partially healed blazes.

Set an iron post, 28 ins. long, 2 1/2 ins. diam., flush with the ground, with brass cap marked mkd. as shown.

LOT 5 MEANDERS

Along a well-defined gradually sloping sand and gravel beach, at the line of ordinary high water.

1. N. 52°52' E., 127.38
2. N. 53°13' E., 232.98
3. N. 53°46' E., 454.74
4. N. 35°24' E., 283.80
5. N. 28°48' E., 485.76
6. N. 38°11' E., 263.34
7. N. 73°25' E., 199.32
8. S. 37°25' E., 155.10
9. S. 19°20' E., 186.12
10. S. 5°01' E., 258.72
11. S. 5°07' W., 301.62
12. S. 13°38' W., 299.64

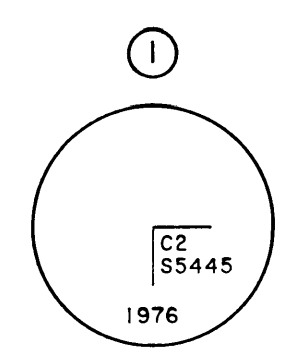
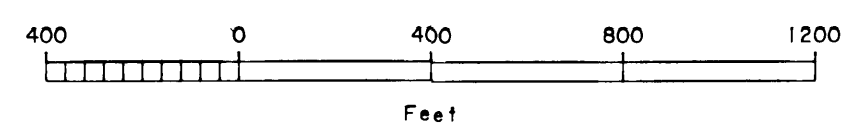
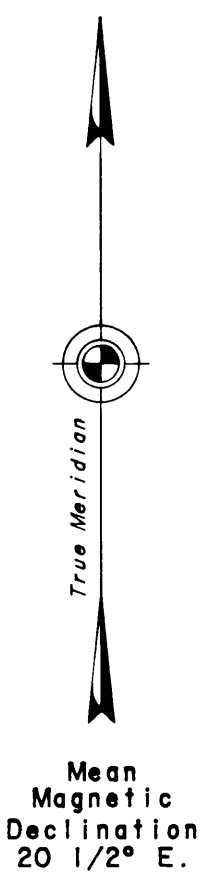
LOT 5 IMPROVEMENTS

From the witness cor. to cor. No. 1, Lot 5, a meander cor.

The SE cor. of a smokehouse, 12 x 24 ft., bears N. 15°08' E., 451 ft. dist., long side bears N. 85° W.

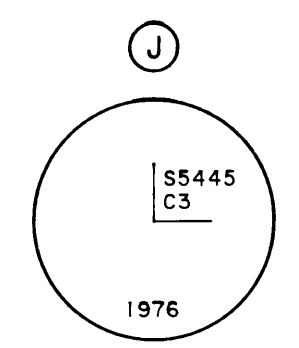
The SE cor. of a log cabin, 17 x 30 ft., bears N. 16°49' E., 381 ft. dist., long side bears N. 15° W.

U.S. SURVEY No. 5444 LOT 1



Recovered an alum. post, 2 1/2 ins. diam., firmly set, projecting 5 ins. above the ground, with alum. cap mkd. as shown

The original bearing tree was not searched for.



Recovered an alum. post, 2 1/2 ins. diam., firmly set, projecting 8 ins. above the ground, with alum. cap mkd. as shown, from which the original bearing trees

A spruce, 7 ins. diam., bears N. 56° E., 4.6 ft. dist., mkd. in part S5445 BT on a partially healed blaze.

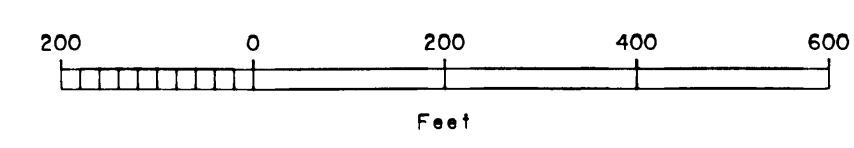
A spruce, 11 ins. diam., bears S. 38° W., 3.3 ft. dist., with healed blazes.

BEARING TREES

CORNER	SPECIES	DIAM.	BEARING	DISTANCE	MARKS
Cor. No. 2, Lot 4	SPRUCE	4 ins.	N. 88 1/2° W.	61.0 ft.	X BT
Cor. No. 3, Lot 4	SPRUCE	13 ins.	S. 25° E.	14.5 ft.	X BT
Cor. No. 3, Lot 4	SPRUCE	10 ins.	N. 77 1/2° W.	11.2 ft.	X BT
W.C.M.C. No. 1, Lot 5	COTTONWOOD	11 ins.	S. 84 1/2° W.	23.1 ft.	X BT
W.C.M.C. No. 1, Lot 5	COTTONWOOD	9 ins.	N. 1° W.	35.6 ft.	X BT
Cor. No. 3, Lot 5	COTTONWOOD	10 ins.	S. 89 1/2° W.	138.3 ft.	X BT
W.C.M.C. No. 4, Lot 5	COTTONWOOD	10 ins.	N. 81 1/2° E.	30.7 ft.	X BT
W.C.M.C. No. 4, Lot 5	COTTONWOOD	8 ins.	S. 30° W.	15.8 ft.	X BT

LEGEND

- Iron post, 28 ins. long, 2 1/2 ins. diam., set 27 to 32 ins. in the ground, with brass cap mkd. with the cor. No., Lot No., ANCSA14C, UNC, the date 1988 and the lot lines, unless otherwise noted. Monuments adjoining other surveys are mkd. with the adjoining survey information. Witness cor., meander cors. have additional marks WC, MC, an arrow pointing to the true point, and meander lines.
- Recovered monument.

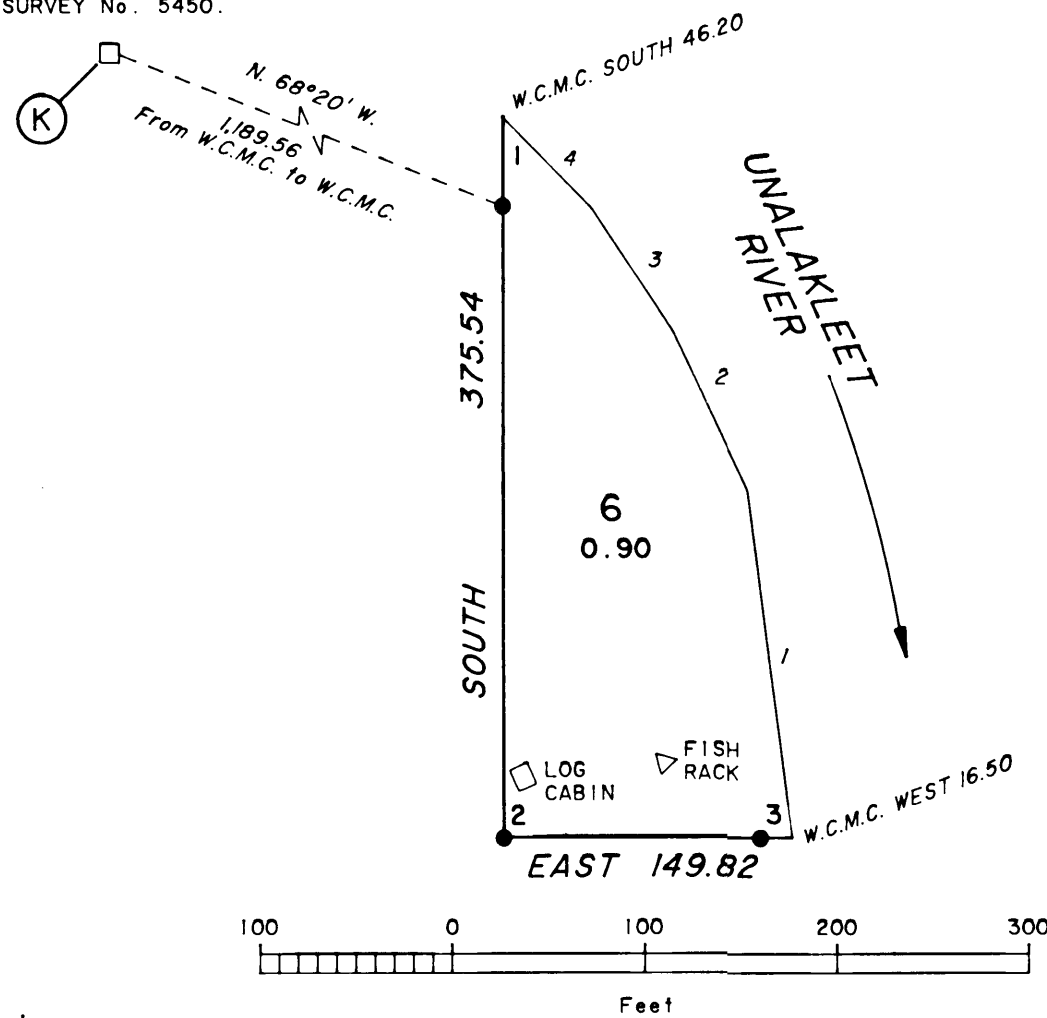


ALASKA NATIVE CLAIMS SETTLEMENT ACT
 (ANCSA) SECTION 14(c), LOTS 1 THROUGH 13
 (P.L. 92-203, 85 STAT. 688, 702, 703)
 UNALAKLEET NATIVE CORPORATION
 UNALAKLEET, ALASKA

REFERENCE SHOULD BE MADE
 TO
 SHEET No. 1
 FOR SURVEY INFORMATION

Recovered an iron pipe, 2 ins. diam., firmly set,
 projecting 12 ins. above the ground, and in
 a collar of stone, 3 ft. diam., with brass cap
 mkd. as shown
 Referenced as shown in the official record.

WITNESS COR. TO COR. No. 7,
 LOT 1, A MEANDER COR.
 U.S. SURVEY No. 5450.



LOT 6 MEANDERS

Along a moderately sloping stable bank, 2 to 6 ft. high, at the line of ordinary high water.

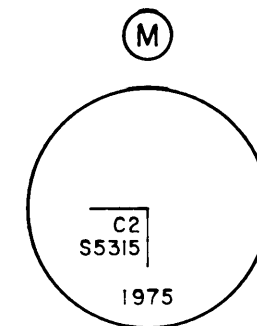
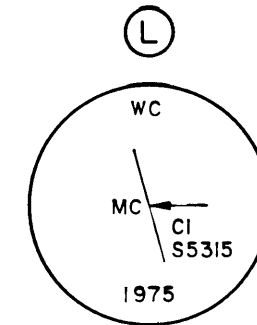
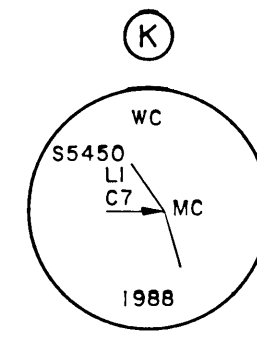
- N. 7°13' W., 183.48
- N. 25°04' W., 91.08
- N. 33°17' W., 76.56
- N. 44°17' W., 66.00

LOT 6 IMPROVEMENTS

From cor. No. 2, Lot 6

The SE cor. of a partially completed log cabin, 10 x 12 ft., bears N. 31°17' E., 33 ft. dist., long side bears N. 25° W.

The most southerly cor. of a triangular fishrack, 12 ft. on a side, bears N. 67°53' E., 87 ft. dist., a side bears N. 50° E.



Recovered an alum. rod, 5/8 in. diam., loosely set, projecting 2 1/2 ft. above the ground, with alum. cap mkd. WC MC C7 LI S5450 1977, from which the original bearing trees

A white spruce, 7 ins. diam., bears S. 68° E., 18.5 ft. dist., with illegible marks on partially healed blazes.

A white spruce, 6 ins. diam., bears S. 74° W., 31.0 ft. dist., with illegible marks on partially healed blazes.

At the corner point

Set an iron post, 28 ins. long, 2 1/2 ins. diam., 26 ins. in the ground, with brass cap mkd. as shown.

Bury original alum. rod alongside iron post.

Recovered an iron post, 2 1/2 ins. diam., firmly set, flush with the ground, with brass cap mkd. as shown, from which the original bearing trees

A spruce, 9 ins. diam., bears N. 14° E., 31.7 ft. dist., mkd. X BT on open blazes.

A spruce, 13 ins. diam., bears S. 54° W., 35.0 ft. dist., mkd. X BT on open blazes.

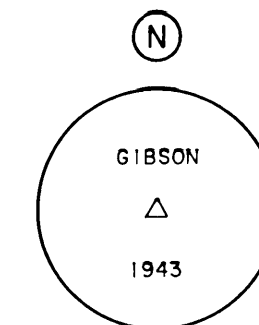
Encircle iron post with a collar of stone, 2 ft. diam.

Recovered an iron post, 2 1/2 ins. diam., firmly set, projecting 4 ins. above the ground, with brass cap mkd. as shown, from which the original bearing trees

A spruce, 13 ins. diam., bears N. 84° E., 47.5 ft. dist., mkd. X BT on open blazes.

A spruce, 10 ins. diam., bears S. 31° E., 11.9 ft. dist., mkd. X BT on open blazes.

A spruce, 6 ins. diam., bears N. 85° W., 45.5 ft. dist., mkd. X BT on open blazes.



LEGEND

- Iron post, 28 ins. long, 2 1/2 ins. diam., set 27 to 32 ins. in the ground, with brass cap mkd. with the cor. No., Lot No., ANCSA14C, UNC, the date 1988, and the lot lines. Monuments adjoining other surveys are mkd. with the adjoining survey information. Witness cor. meander cor. have additional marks WC, MC, an arrow pointing to the true point, and meander lines.
- Recovered monument.

BEARING TREES

CORNER	SPECIES	DIAM.	BEARING	DISTANCE	MARKS
W.C.M.C. No. 1, Lot 6	SPRUCE	13 ins.	S. 41 1/2° W.	71.6 ft.	X BT
W.C.M.C. No. 1, Lot 6	SPRUCE	16 ins.	N. 58° W.	97.8 ft.	X BT
Cor. No. 2, Lot 6	SPRUCE	16 ins.	S. 38 1/2° E.	118.1 ft.	
Cor. No. 2, Lot 6	SPRUCE	8 ins.	S. 39° W.	68.6 ft.	X BT
W.C.M.C. No. 3, Lot 6	SPRUCE	16 ins.	S. 33° W.	109.2 ft.	X BT
W.C.M.C. No. 3, Lot 6	COTTONWOOD	8 ins.	N. 72° W.	10.9 ft.	X BT
Cor. No. 2, Lot 7	SPRUCE	8 ins.	S. 72° E.	69.3 ft.	X BT
Cor. No. 3, Lot 7	SPRUCE	5 ins.	S. 69° W.	71.0 ft.	X BT
Cor. No. 4, Lot 7	SPRUCE	8 ins.	S. 54° E.	19.8 ft.	X BT
Cor. No. 4, Lot 7	SPRUCE	10 ins.	S. 22° E.	4.0 ft.	X BT
W.C.M.C. No. 5, Lot 7	SPRUCE	8 ins.	N. 41 1/2° E.	77.9 ft.	X BT
W.C.M.C. No. 1, Lot 8	SPRUCE	10 ins.	N. 22 1/4° E.	24.3 ft.	X BT
W.C.M.C. No. 1, Lot 8	SPRUCE	10 ins.	N. 86° W.	10.1 ft.	X BT
Cor. No. 2, Lot 8	SPRUCE	7 ins.	N. 6° E.	23.1 ft.	X BT
Cor. No. 2, Lot 8	SPRUCE	10 ins.	S. 71 1/2° E.	25.1 ft.	X BT
W.C.M.C. No. 3, Lot 8	SPRUCE	7 ins.	S. 35° E.	15.6 ft.	X BT
W.C.M.C. No. 3, Lot 8	SPRUCE	7 ins.	S. 46° W.	23.9 ft.	X BT

Note: The bearing tree in the SW quadrant at W.C.M.C. No. 3, Lot 6 was also selected for the bearing tree in the SE quadrant at cor. No. 2, Lot 6.

LOT 7 MEANDERS

Along a well-defined steep bank, 5 to 20 ft. high, at the line of ordinary high water.

- S. 7°47' E., 204.60
- S. 45°33' E., 69.96
- S. 3°22' W., 228.36
- S. 8°05' E., 357.06
- S. 20°17' E., 258.06

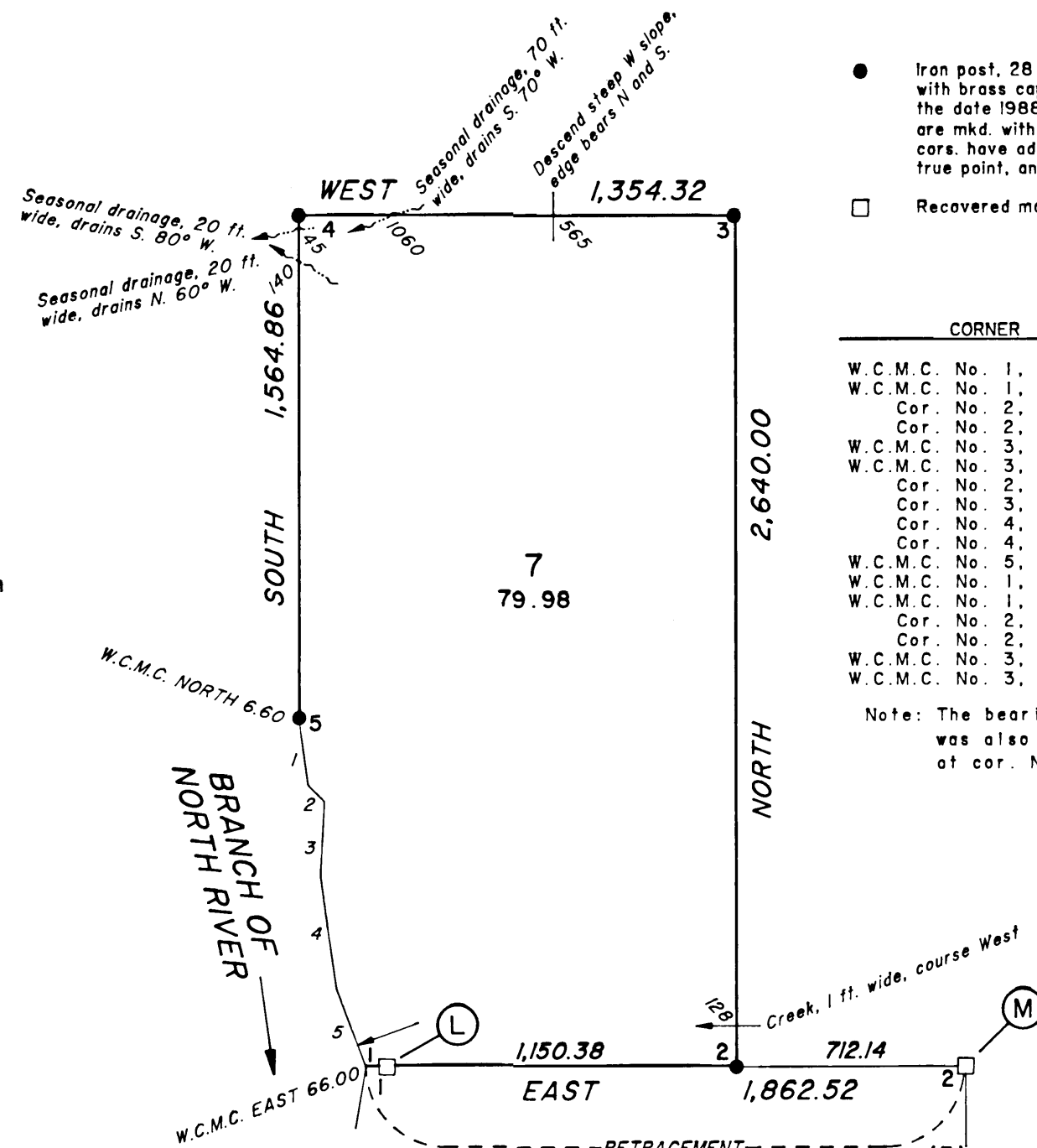
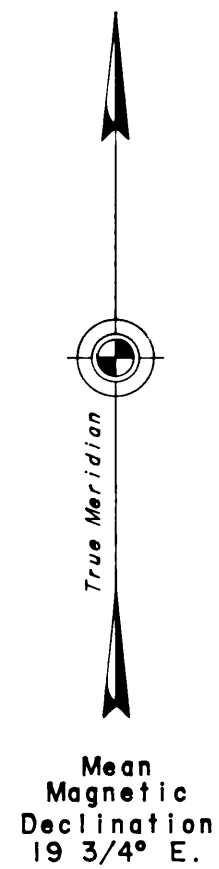
At 186 ft. on this course, creek, 6 ft. wide, course from N. 70° E.

LOT 8 MEANDERS

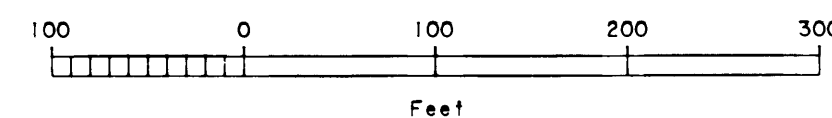
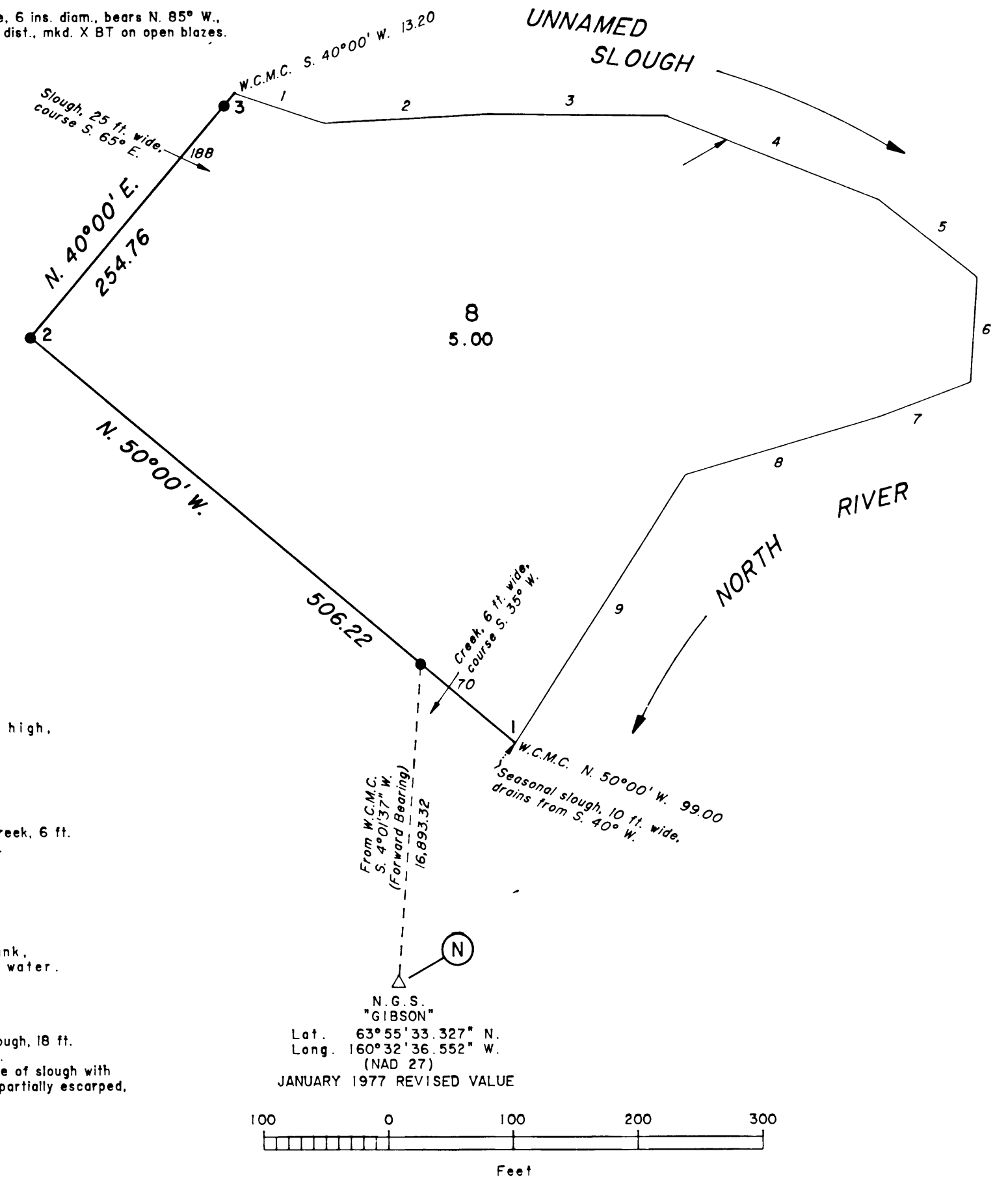
Along a well-defined moderately sloping bank, 2 to 4 ft. high, at the line of ordinary high water.

- S. 71°27' E., 75.90
- N. 87°00' E., 132.00
- S. 89°24' E., 141.90
- S. 68°30' E., 182.16
- S. 51°48' E., 100.32
- S. 3°36' W., 84.48
- S. 69°24' W., 77.22
- S. 73°18' W., 162.36
- S. 32°29' W., 254.76

At 52 ft. on this course, slough, 18 ft. wide, course from S. 60° W.
 At end of course, confluence of slough with North River; bank becomes partially escarped, 4 ft. high.



U.S. SURVEY No. 5315



N.G.S. "GIBSON"
 Lot. 63°55'33.327" N.
 Long. 160°32'36.552" W.
 (NAD 27)
 JANUARY 1977 REVISED VALUE

ALASKA NATIVE CLAIMS SETTLEMENT ACT
(ANCSA) SECTION 14(c), LOTS 1 THROUGH 13
(P.L. 92-203, 85 STAT. 688, 702, 703)
UNALAKLEET NATIVE CORPORATION
UNALAKLEET, ALASKA

REFERENCE SHOULD BE MADE TO
SHEET No. 1
FOR SURVEY INFORMATION

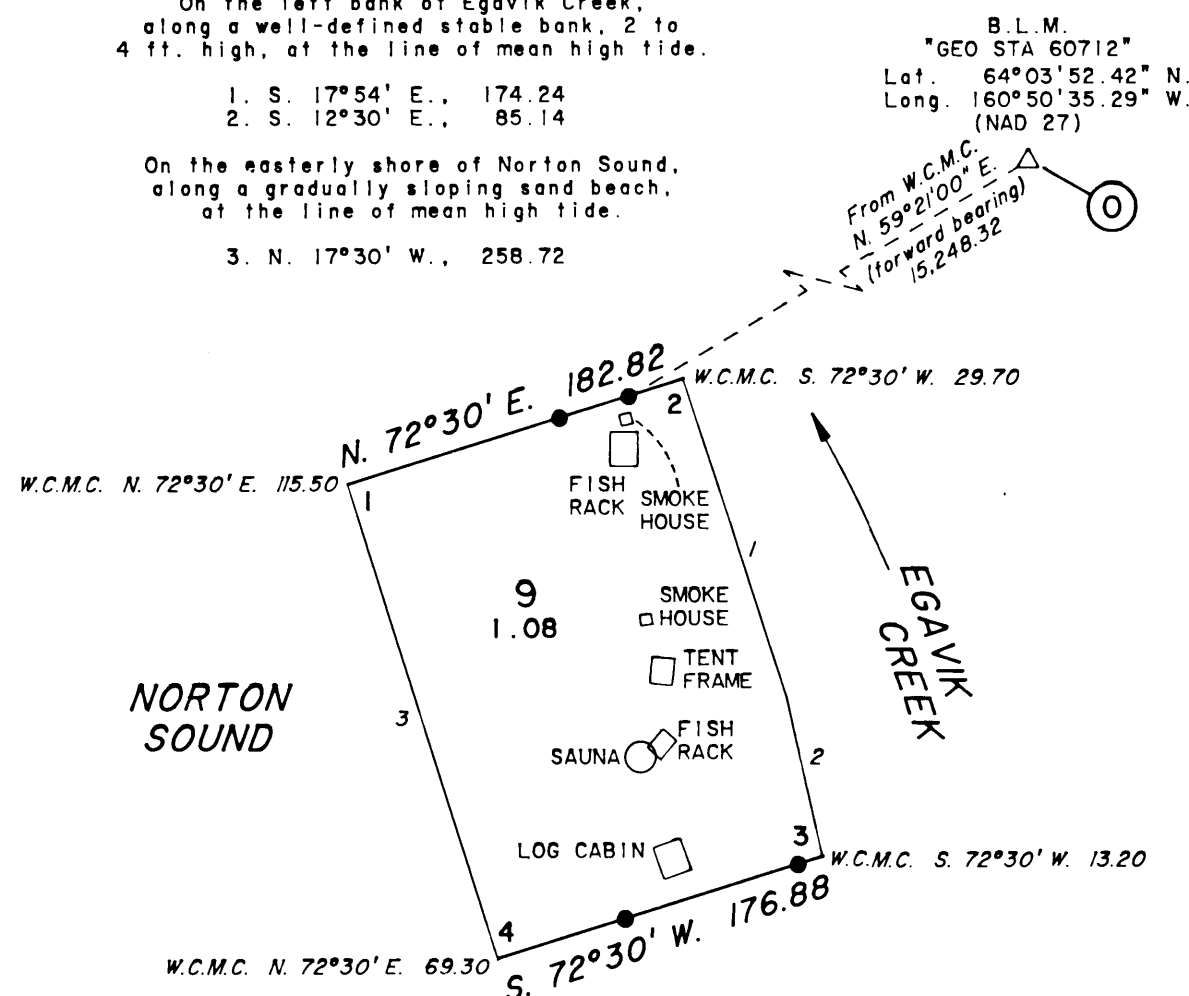
LOT 9 MEANDERS

On the left bank of Egavik Creek, along a well-defined stable bank, 2 to 4 ft. high, at the line of mean high tide.

- S. 17°54' E., 174.24
- S. 12°30' E., 85.14

On the easterly shore of Norton Sound, along a gradually sloping sand beach, at the line of mean high tide.

- N. 17°30' W., 258.72



LOT 9 IMPROVEMENTS

From the witness cor. to cor. No. 2, Lot 9, a meander cor.

The NE cor. of a fishrack, 14 1/2 x 18 ft., bears S. 14°16' E., 19 ft. dist., long side bears South.

The NE cor. of a smokehouse, 6 x 6 ft., bears S. 9°08' E., 14 ft. dist., one side bears S. 15° E.

From the witness cor. to cor. No. 4, Lot 9, a meander cor.

The SW cor. of a smokehouse, 5 1/2 x 6 ft., bears N. 3°08' E., 153 ft. dist., long side bears N. 80° E.

The center of a log tepee sauna, 16 ft. diam., bears N. 5°25' E., 85 ft. dist.

The SE cor. of a tent frame, 12 x 14 ft., bears N. 16°27' E., 124 ft. dist., long side bears N. 5° E.

The most easterly cor. of a fishrack, 9 1/2 x 13 ft., bears N. 16°06' E., 97 ft. dist., long side bears S. 40° W.

The SW cor. of an unfinished log cabin, 15 x 17 1/2 ft., bears N. 44°14' E., 29 ft. dist., long side bears N. 20° W.

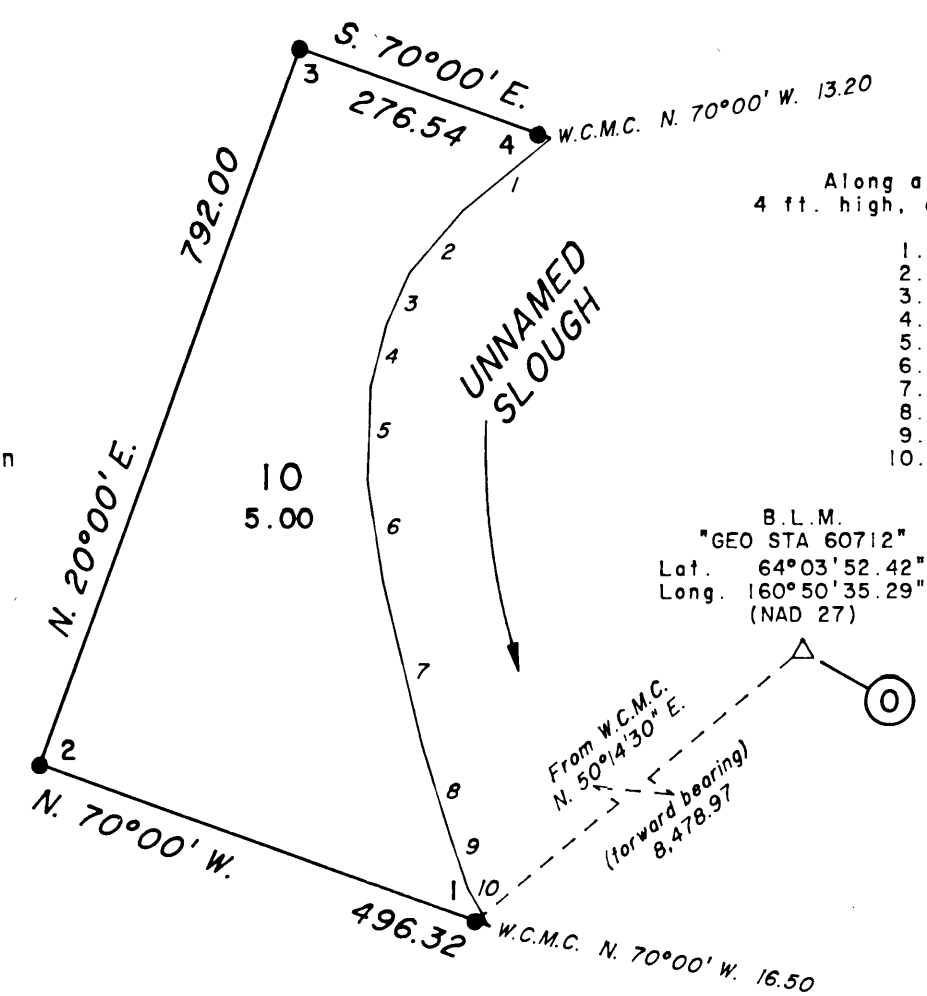
BEARING TREES

CORNER	SPECIES	DIAM.	BEARING	DISTANCE	MARKS
W.C.M.C. No. 1, Lot 10	SPRUCE	8 ins.	S. 52° W.	10.5 ft.	X BT
W.C.M.C. No. 1, Lot 10	SPRUCE	10 ins.	N. 13° W.	18.8 ft.	X BT
Cor. No. 2, Lot 10	SPRUCE	6 ins.	N. 53° E.	209.2 ft.	X BT
Cor. No. 2, Lot 10	SPRUCE	6 ins.	N. 69° W.	157.2 ft.	X BT
Cor. No. 3, Lot 10	SPRUCE	6 ins.	N. 68° E.	7.2 ft.	X BT
Cor. No. 3, Lot 10	SPRUCE	8 ins.	S. 17 1/4° W.	66.9 ft.	X BT
W.C.M.C. No. 4, Lot 10	SPRUCE	8 ins.	N. 1° E.	6.6 ft.	X BT
W.C.M.C. No. 4, Lot 10	SPRUCE	7 ins.	S. 85° W.	15.4 ft.	X BT
W.C.M.C. No. 1, Lot 11	SPRUCE	9 ins.	N. 39° E.	30.0 ft.	X BT
W.C.M.C. No. 1, Lot 11	SPRUCE	4 ins.	N. 59° W.	64.5 ft.	X BT
Cor. No. 2, Lot 11	SPRUCE	8 ins.	S. 58° E.	34.9 ft.	X BT
Cor. No. 2, Lot 11	SPRUCE	12 ins.	N. 5 3/4° W.	96.4 ft.	X BT
Cor. No. 3, Lot 11	SPRUCE	15 ins.	S. 37° E.	19.3 ft.	X BT
Cor. No. 3, Lot 11	SPRUCE	12 ins.	S. 57° W.	17.6 ft.	X BT
W.C.M.C. No. 4, Lot 11	SPRUCE	14 ins.	N. 47° W.	34.6 ft.	X BT
W.C.M.C. No. 4, Lot 11	SPRUCE	11 ins.	N. 13° W.	63.8 ft.	X BT
W.C.M.C. No. 1, Lot 13	SPRUCE	5 ins.	S. 58 1/2° E.	23.7 ft.	X BT
W.C.M.C. No. 1, Lot 13	SPRUCE	6 ins.	S. 38 1/4° W.	25.0 ft.	X BT
Cor. No. 2, Lot 13	SPRUCE	4 ins.	N. 16 1/4° E.	42.3 ft.	X BT
Cor. No. 2, Lot 13	SPRUCE	5 ins.	N. 51 3/4° E.	35.3 ft.	X BT
W.C. No. 3, Lot 13	SPRUCE	4 ins.	N. 6° E.	58.6 ft.	X BT
W.C. No. 3, Lot 13	SPRUCE	5 ins.	N. 88° W.	156.9 ft.	X BT
W.C.M.C. No. 4, Lot 13	SPRUCE	7 ins.	S. 85 1/2° E.	1.7 ft.	X BT
W.C.M.C. No. 4, Lot 13	SPRUCE	8 ins.	N. 84 3/4° W.	25.9 ft.	X BT

LOT 10 MEANDERS

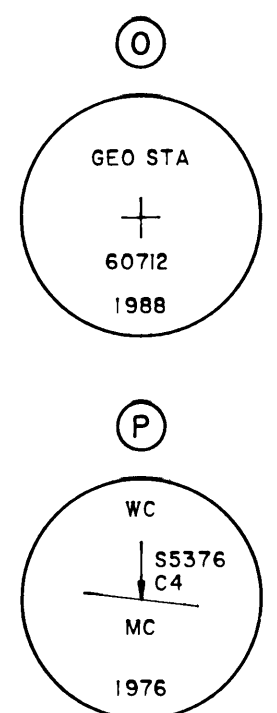
Along a moderately steep stable bank, 4 ft. high, at the line of ordinary high water.

- S. 50°54' W., 117.48
- S. 40°39' W., 84.48
- S. 24°11' W., 56.74
- S. 14°26' W., 67.32
- S. 2°03' W., 97.68
- S. 8°56' E., 105.60
- S. 13°15' E., 178.20
- S. 17°02' E., 100.98
- S. 18°30' E., 53.46
- S. 29°10' E., 45.54



LEGEND

- Iron post, 28 ins. long, 2 1/2 ins. diam., set 27 to 32 ins. in the ground, with brass cap mkd. with the cor. No., Lot No., ANCSA14C, UNC, the date 1988, and the lot lines. Witness cor. meander cor. have additional marks WC, MC, an arrow pointing to the true point, and meander lines.
- Stainless steel post, 28 ins. long, 2 1/2 ins. diam., set flush with the ground, with brass cap mkd. with the cor. No., Lot No., ANCSA14C, UNC, the date 1991, and the lot lines. Witness cor. meander cor. have additional marks WC, MC, an arrow pointing to the true point, and meander lines.
- Recovered monument.

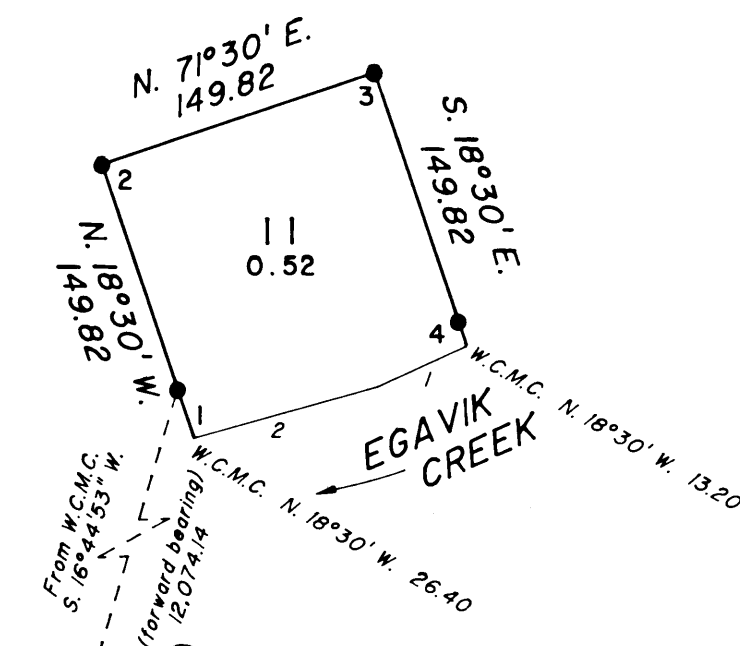


Recovered an iron post, 2 1/2 ins. diam., firmly set, projecting 5 ins. above the ground, and in a collar of stone, 1 ft. diam., with brass cap mkd. as shown

Referenced as shown in the official record.

Recovered an iron post, 2 1/2 ins. diam., firmly set, projecting 3 ins. above the ground, and in a collar of stone, 2 ft. diam., with brass cap mkd. as shown

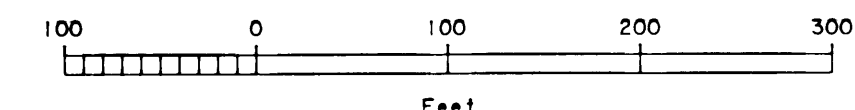
No accessories of record.



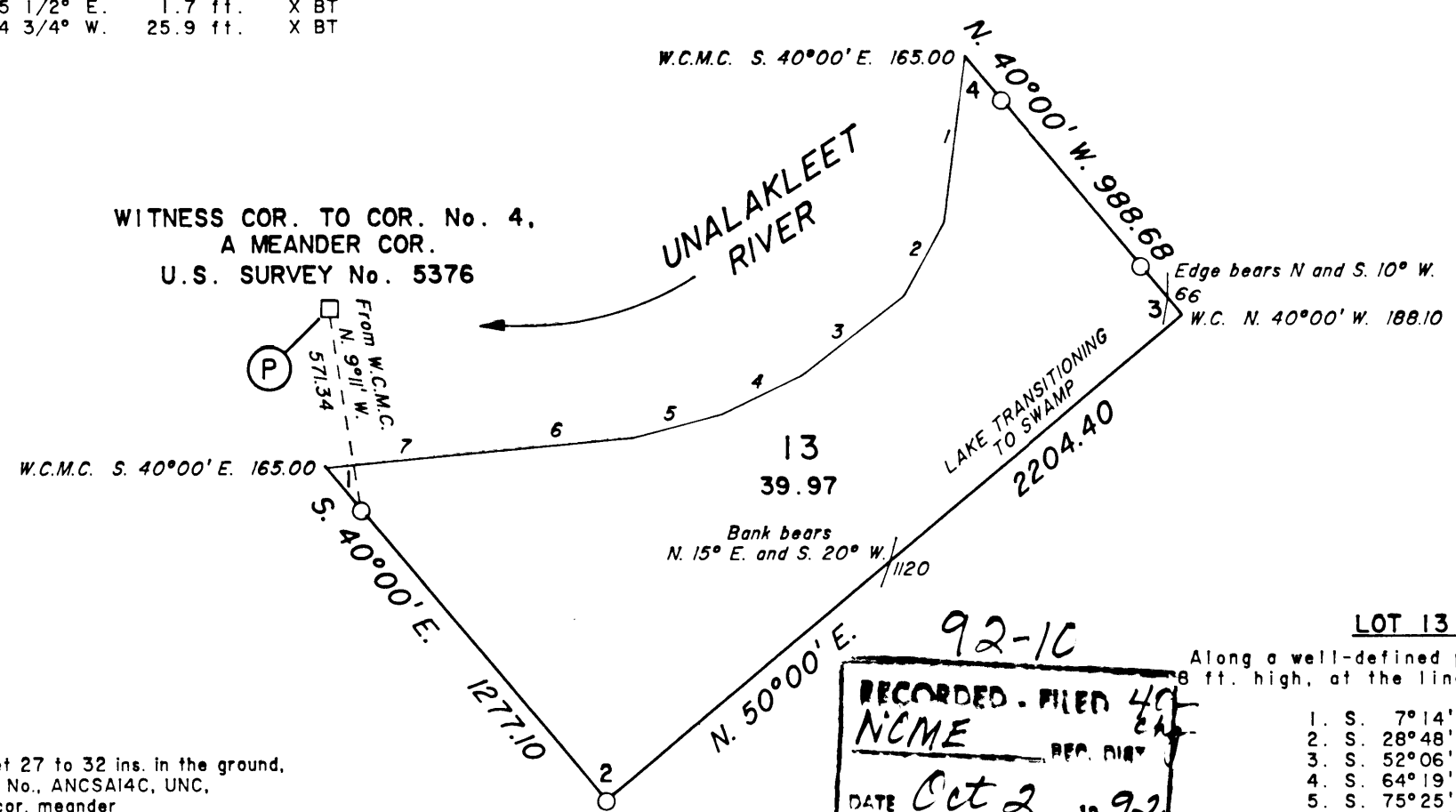
LOT 11 MEANDERS

Along a well-defined steep bank, 6 ft. high, with a rock beach, at the line of ordinary high water.

- S. 65°29' W., 50.82
- S. 74°34' W., 99.66



WITNESS COR. TO COR. No. 4,
A MEANDER COR.
U.S. SURVEY No. 5376



LOT 13 MEANDERS

Along a well-defined partially escarped bank, 8 ft. high, at the line of ordinary high water.

- S. 7°14' W., 485.76
- S. 28°48' W., 244.86
- S. 52°06' W., 377.52
- S. 64°19' W., 261.36
- S. 75°25' W., 271.26
- S. 84°36' W., 490.38
- S. 84°26' W., 412.50

92-1C
RECORDED - FILED 40
N.C.M.E. REP. DIV.
DATE Oct 2, 1992
TIME 1:45 P.M.
Requested by USA/BAM
Address