

ALASKA NATIVE CLAIMS SETTLEMENT ACT (ANCSA) SECTION 14(c), TRACTS A THROUGH I P.L. 92-203 (85 STAT. 688, 702, 703) NINILCHIK NATIVE ASSOCIATION, INC. AT

NINILCHIK, ALASKA

This plat, in 6 sheets, contains the entire survey record.

The history of surveys is listed on sheets 2 and 6.

This survey was executed by William W. McClintock, Registered Alaska Land Surveyor No. 5480, and Certified Federal Surveyor No. 1155, for Ninilchik Native Association, Inc. during September and October 2008, in accordance with the specifications set forth in the Manual of Instructions for the Survey of the Public Lands of the United States, 1973, Special Instructions dated May 7, 2008, approved May 8, 2008, under Contract NAA080009, awarded August 28, 2008 and Notice to Proceed dated August 29, 2008.

Field Assistants were:

- Charles W. Lamb, Party Chief
Richard L. Gaffey, Party Chief
Daryl K. Moistner, Party Chief
Ralph J. Sousa, Survey Technician
William A. McClintock, Survey Technician

Area Surveyed: 285.82 Acres

The azimuth was established using Global Satellite Positioning Systems (GPS/Glonass) and refers to the true meridian.

The geographic position of the N 1/16 corner of Sections 7 and 12, Township 2 South, Ranges 13 and 14 West, Seward Meridian, Alaska, as determined from the 1965 record information is:

Latitude: 60° 01' 09" North (NAD 27)
Longitude: 151° 35' 58" West

The corner positions for this survey were determined using Static Satellite Positioning techniques.

The mean magnetic declination was computed using the U.S. Geological Survey Geomagix software program and database file, igrf-2005.cof

This survey is located in the vicinity of Ninilchik, Alaska within surveyed and protracted Sections 7, 17, and 18 Township 2 South, Range 13 West, Seward Meridian, Alaska.

The land is predominantly level with a few creeks and small bluffs and is mostly wooded with spruce, birch and occasional cottonwood. Oil Well Road passes through Sections 7, 8, and 17.

The soil is mostly a sandy loam mixture.

HOMER RECORDING DISTRICT

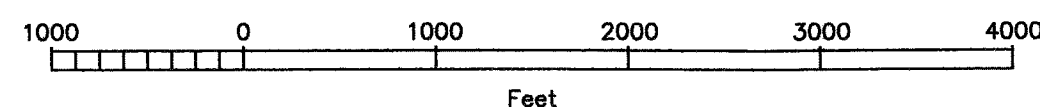
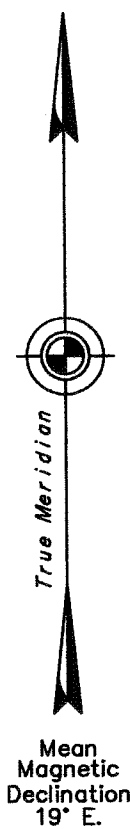
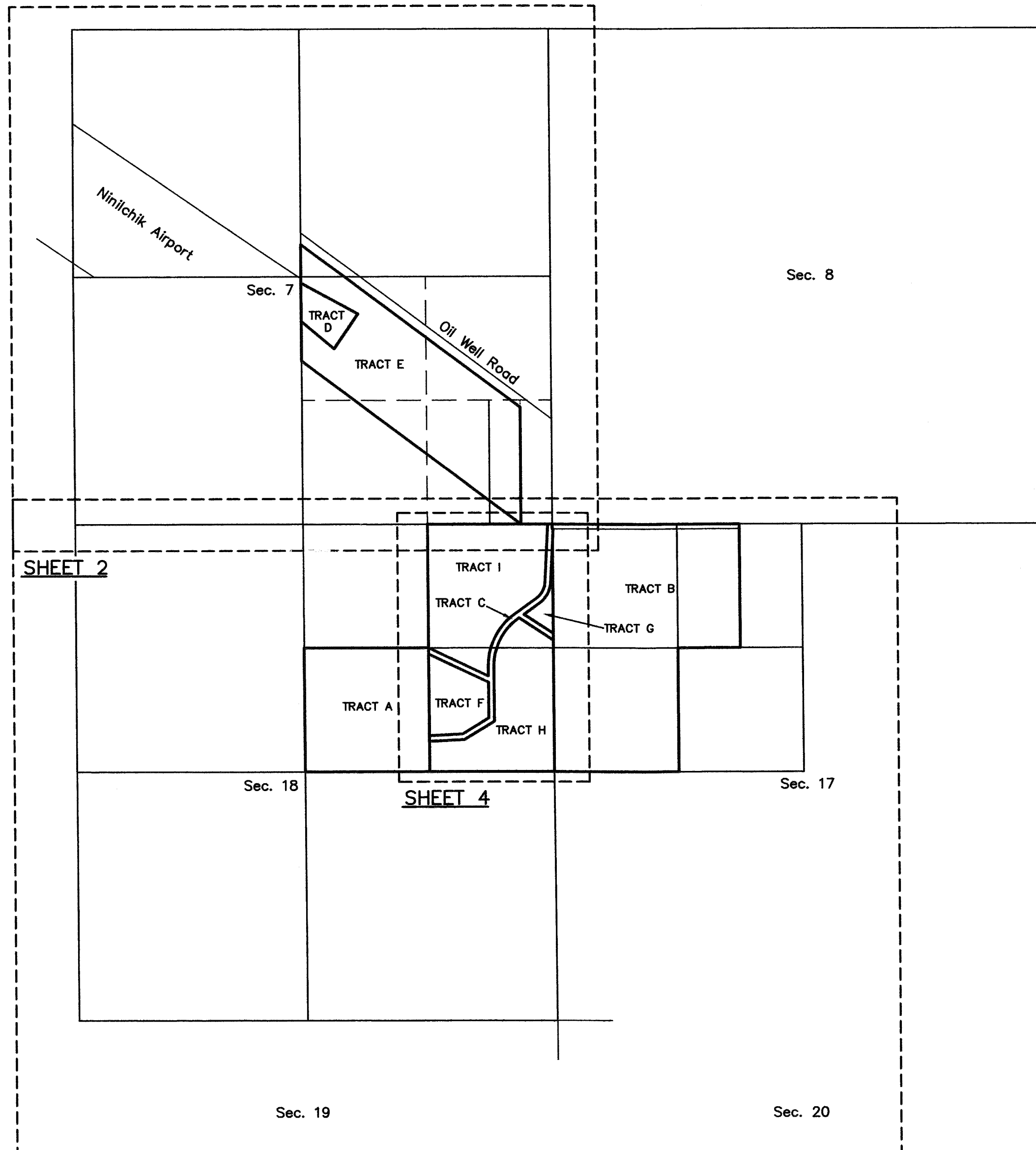
UNITED STATES DEPARTMENT OF THE INTERIOR BUREAU OF LAND MANAGEMENT Anchorage, Alaska

The survey represented by this plat, sheets 1 through 6, having been properly executed and examined, is hereby accepted for having fulfilled the requirements of Section 14(c) of the Alaska Native Claims Settlement Act.

For the Director Stephen B. Hamrick August 31, 2010 Date
Chief Cadastral Surveyor for Alaska

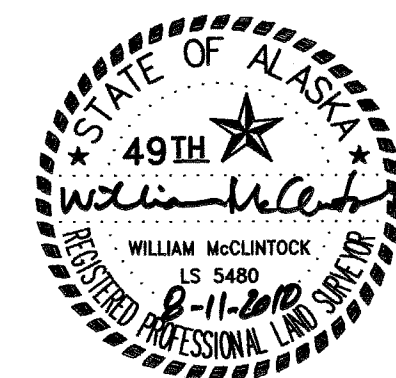
SHEET INDEX

- Sheet 2 Tracts D and E and History of Surveys
Sheet 3 Tracts A, B, F, H, & I
Sheet 4 Tract C & G
Sheet 5 Recovered Monuments
Sheet 6 Recovered Monuments and History of Surveys



I hereby certify, upon honor, that, Tracts A through I are on lands Conveyed to Ninilchik Native Association Inc. by Patent 50-91-0580, dated September 25, 1991, and by Patent 50-78-0053, dated May 26, 1978 issued by the United States of America; said tracts also fulfill all entitlements under the provisions of ANCSA 14(c) as requested by Ninilchik Native Association Inc. Resolution No. 2002-11 and Ninilchik Native Association Inc. ANCSA 14(c) Map of Boundaries accepted March 15, 2006.

I, William W. McClintock, Registered Alaska Land Surveyor No. 5480, and Certified Federal Surveyor No. 1155, HEREBY CERTIFY, upon honor, that, in pursuance of Special Instructions dated May 7, 2008 and under Contract No. NAA080009, awarded August 28, 2008, I have executed the survey depicted on this plat in strict conformity with said Special Instructions, the Manual of Instructions for the Survey of the Public Lands of the United States, 1973, and in the specific manner described on this plat.



8-24-2010 Date

Signature of President, Ninilchik Native Association Inc.

8-11-2010 Date

Signature of William McClintock, Registered Land Surveyor

Homer 2010-37

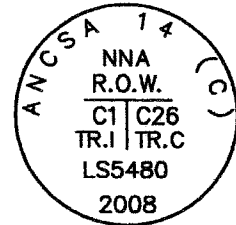
LEGEND

- ANCSA Primary Monument Set This Survey
- Secondary Monument Set This Survey
- Monument Recovered This Survey
- (S7) Set Monument Designator
- (N) Recovered Monument Designator
See Sheets 5 and 6 for descriptions

MONUMENTS SET

Primary: Set a stainless steel post, 28 ins. long, 2 1/2 ins. diameter, 25 to 28 ins. in the ground, with a magnet in a white plastic case at its base, and a brass cap marked as shown.

Secondary: Set 2 ins. Aluminum Cap on a 5/8 in. x 30 ins. pointed rebar 28 ins. in the ground.



Typical cap marking for all monuments set this survey

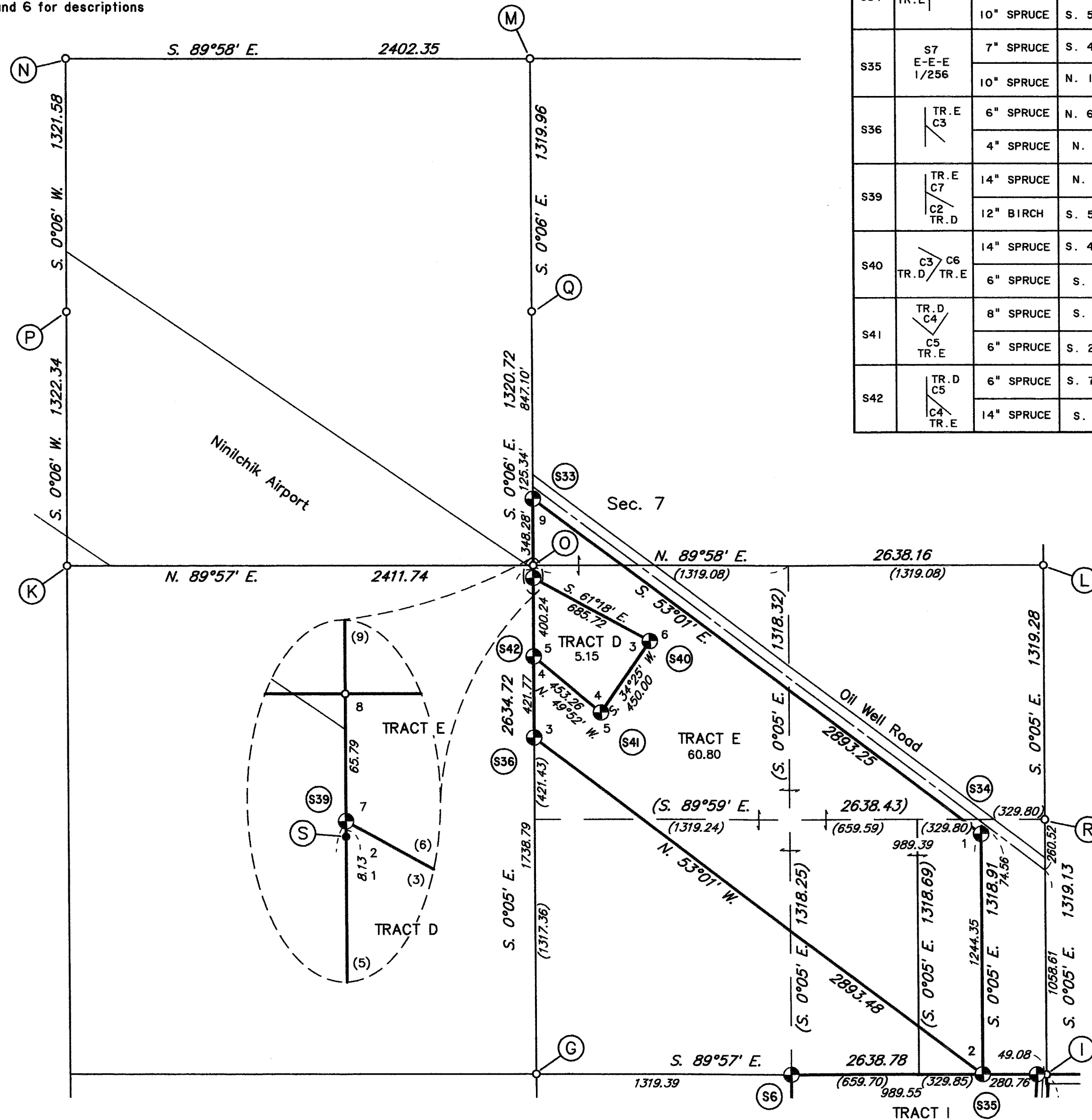
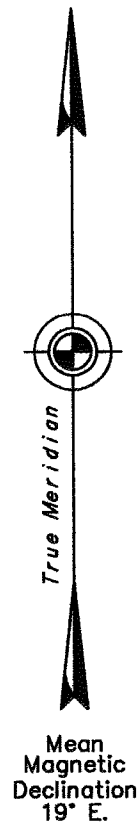
ACCESSORY TABLE

Cap	Marking	Accessory	Bears	Dist.(ft.)	Marks
S33	R.O.W. C3 TR.E	6" SPRUCE	S. 23° E.	61.4	X BT
		3" SPRUCE	S. 72 1/2° W.	76.0	X BT
S34	R.O.W. C1 TR.E	9" SPRUCE	S. 27 1/2° E.	77.9	X BT
		10" SPRUCE	S. 54 3/4° W.	138.9	X BT
S35	S7 E-E-E 1/256	7" SPRUCE	S. 47 1/4° E.	38.6	EEE1/256S7BT
		10" SPRUCE	N. 12 1/2° W.	11.9	EEE1/256S7BT
S36	TR.E C3	6" SPRUCE	N. 65 3/4° W.	23.9	X BT
		4" SPRUCE	N. 46° W.	80.0	X BT
S39	TR.E C7 C2 TR.D	14" SPRUCE	N. 30° E.	79.2	X BT
		12" BIRCH	S. 51 3/4° E.	12.3	X BT
S40	C3 TR.D C6 TR.E	14" SPRUCE	S. 48 1/2° E.	23.8	X BT
		6" SPRUCE	S. 64° W.	13.0	X BT
S41	TR.D C4 C5 TR.E	8" SPRUCE	S. 73° E.	9.3	X BT
		6" SPRUCE	S. 24 1/2° W.	10.8	X BT
S42	TR.D C5 C4 TR.E	6" SPRUCE	S. 76 3/4° E.	9.3	X BT
		14" SPRUCE	S. 4° W.	65.0	X BT

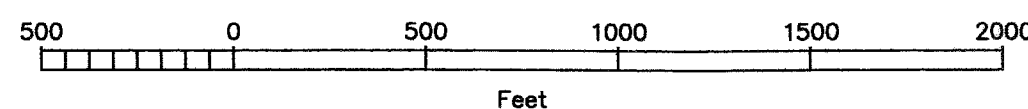
ALASKA NATIVE CLAIMS SETTLEMENT ACT
(ANCSA) SECTION 14(c), TRACTS A THROUGH I
P.L. 92-203 (85 STAT. 688, 702, 703)
NINILCHIK NATIVE ASSOCIATION, INC.
AT

NINILCHIK, ALASKA

REFERENCE SHOULD BE MADE
TO
SHEET I
FOR SURVEY INFORMATION



SEE SHEET 3



HISTORY OF SURVEYS

RECTANGULAR SURVEYS

The survey of the north and west boundaries of Township 2 South, Range 13 West, Seward Meridian, Territory of Alaska, executed by F. W. Williamson, U.S. Cadastral Engineer and Fred Dahlquist, U.S. Surveyor, in 1919 and approved 1920.

The survey of a portion of the subdivisional lines of Township 2 South, Range 13 West, Seward Meridian, Alaska, executed by Hobart B. Hyatt, Cadastral Surveyor, in 1964 and approved 1965.

The survey of the east and south boundary of Township 2 South, Range 13 West, and the corner common to Townships 2 and 3 South, Ranges 12 and 13 West, Seward Meridian, Alaska, executed by Frederick W. Ward, Supervisory Cadastral Surveyor, in 1965 and approved 1972 and 1974.

The plat of the unsurveyed interior portion of Township 2 South, Range 13 West, Seward Meridian, Alaska, designating Tract "A", approved 1974.

The dependent resurvey of a portion of the south boundary, the survey of a portion of the subdivisional lines, and the protraction of a portion of Tract A, Township 2 South, Range 13 West, Seward Meridian, Alaska, executed by Norman L. Eriks, Cadastral Surveyor, in 1976 and approved 1980.

The dependent resurvey of the Third Guide Meridian West on the east boundary, the south boundary, the corner common to Townships 1 and 2 South, Ranges 12 and 13 West, and a portion of the subdivisional lines of Township 2 South, Range 13 West, Seward Meridian, Alaska, executed by Richard T. Helm III, Cadastral Surveyor, in 1987, and approved 1990.

STATE PLATS AND SURVEYS

NINILCHIK AIRPORT, Property Plan, dated February 4, 1981, prepared by State of Alaska, Department of Transportation and Public Facilities, Division of Aviation-Design and Construction, with revisions on December 29, 1982, and November 6, 1984.

(Continued on Sheet 6)

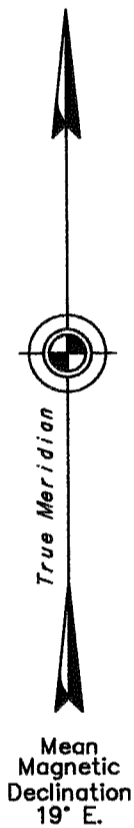
Homer 2010-37
Page 2 of 6

LEGEND

- ANCSA Primary Monument Set This Survey
- Secondary Monument Set This Survey
- Monument Recovered This Survey
- Ⓢ7 Set Monument Designator
- Ⓝ Recovered Monument Designator
See Sheets 5 and 6 for descriptions

CURVE TABLE

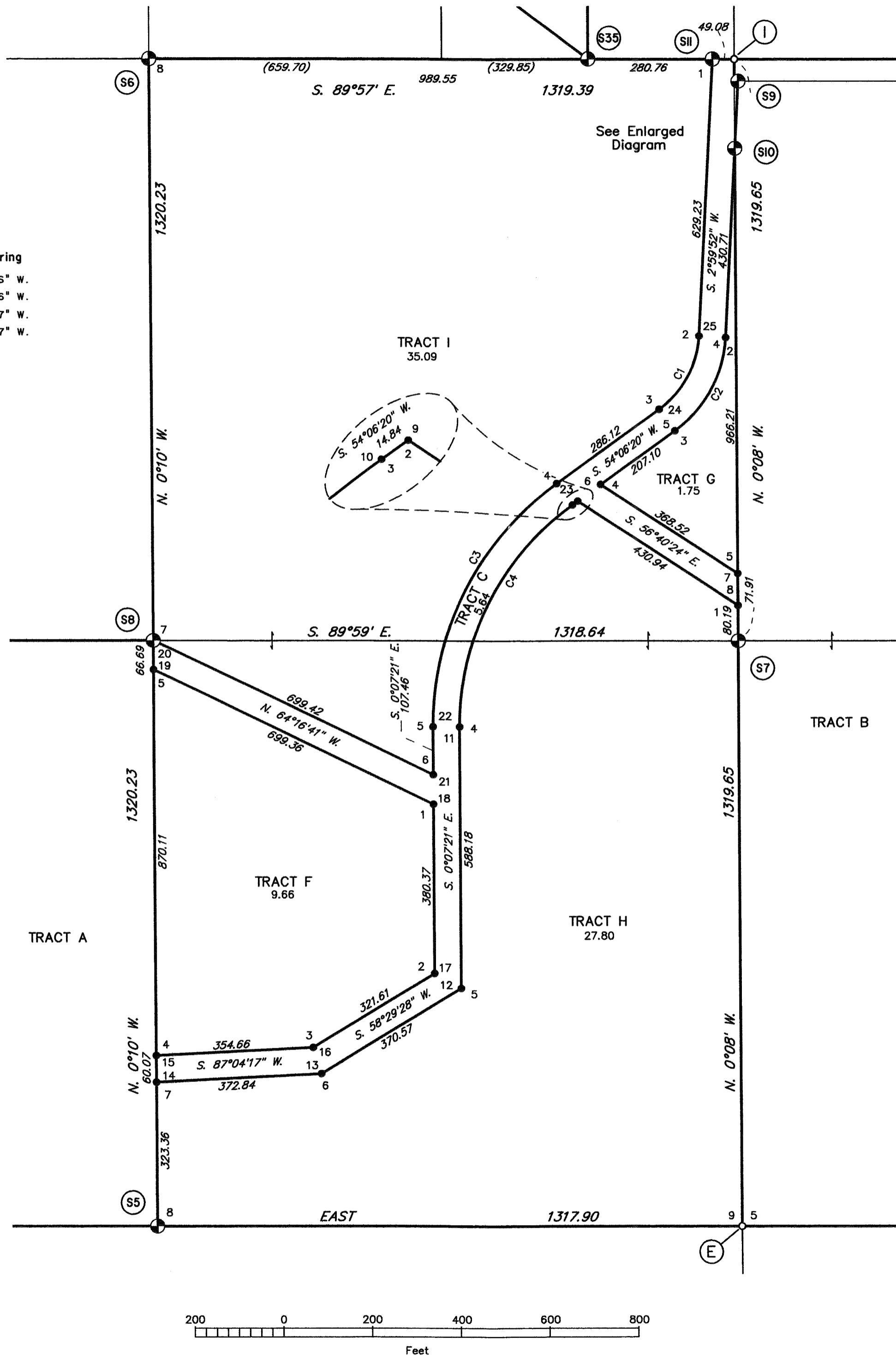
Curve	Length	Radius	Delta	Chord	Chord Bearing
C1	196.24	220.00	51°06'31"	189.80	S. 28°33'06" W.
C2	249.76	280.00	51°06'31"	241.57	S. 28°33'06" W.
C3	643.57	680.00	54°13'34"	619.82	S. 26°59'27" W.
C4	586.78	620.00	54°13'34"	565.13	S. 26°59'27" W.



Typical cap marking for all monuments set this survey

MONUMENTS SET

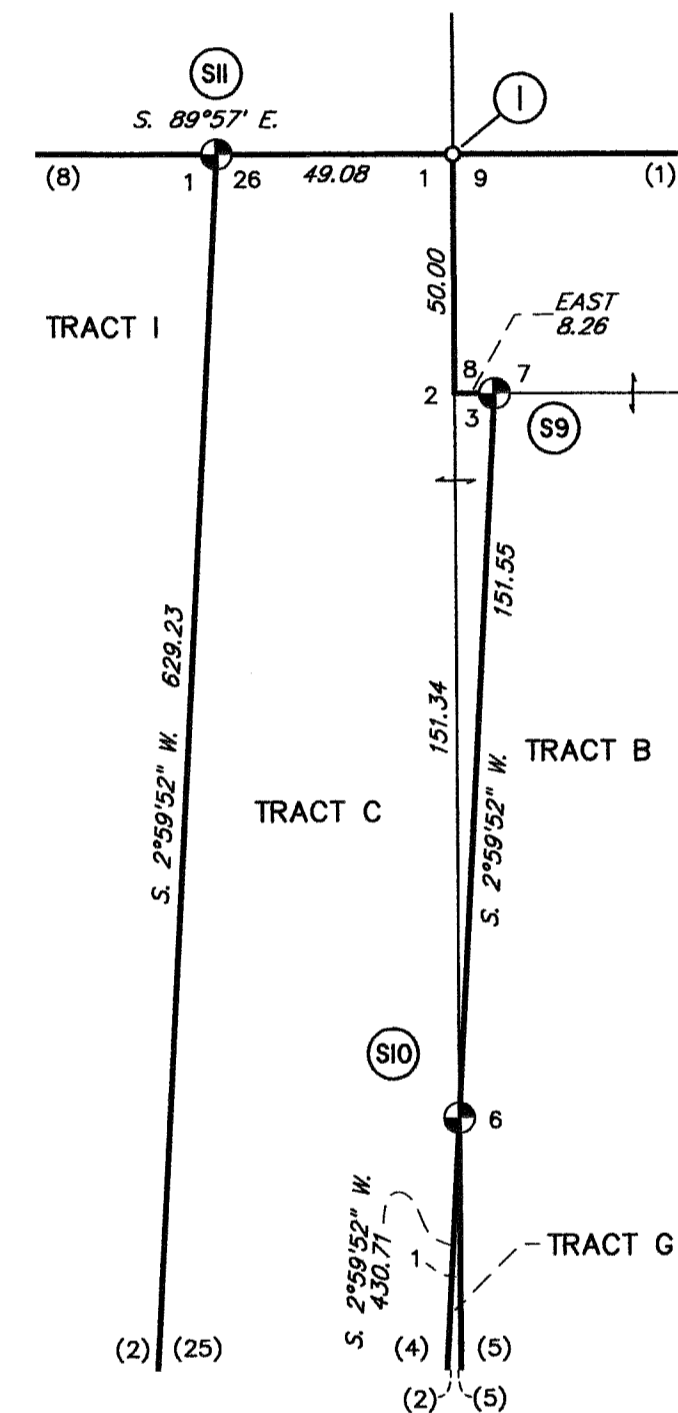
- Primary:** Set a stainless steel post, 28 ins. long, 2 1/2 ins. diameter, 25 to 28 ins. in the ground, with a magnet in a white plastic case at its base, and a brass cap marked as shown.
- Secondary:** Set 2 ins. Aluminum Cap on a 5/8 in. x 30 ins. pointed rebar 28 ins. in the ground.



ALASKA NATIVE CLAIMS SETTLEMENT ACT
(ANCSA) SECTION 14(c), TRACTS A THROUGH I
P.L. 92-203 (85 STAT. 688, 702, 703)
NINILCHIK NATIVE ASSOCIATION, INC.
AT

NINILCHIK, ALASKA

REFERENCE SHOULD BE MADE
TO
SHEET I
FOR SURVEY INFORMATION



Enlarged Diagram

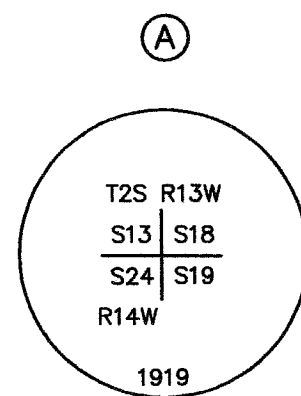
ACCESSORY TABLE

Cap	Marking	Accessory	Bears	Dist.(ft.)	Marks
S9	R.O.W. C3 C7 TR.C TR.B	SILVER MAGNET	N. 45° E.	9.9	N/A
		PINK MAGNET	S. 45° E.	9.9	N/A
S10	TRC C6 TR.B C1 TR.G	PINK MAGNET	S. 45° E.	9.9	N/A
		6" SPRUCE	S. 3° W.	43.4	XBT
S11	R.O.W. C1 C26 TR.I TR.C	PINK MAGNET	S. 10° E.	9.9	N/A
		BLUE MAGNET	S. 80° W.	9.9	N/A

ALASKA NATIVE CLAIMS SETTLEMENT ACT (ANCSA) SECTION 14(c), TRACTS A THROUGH I P.L. 92-203 (85 STAT. 688, 702, 703) NINILCHIK NATIVE ASSOCIATION, INC. AT

NINILCHIK, ALASKA

REFERENCE SHOULD BE MADE TO SHEET I FOR SURVEY INFORMATION



Recovered an iron post 2 ins. diam., projecting 7 ins. above ground with a 2 1/2 in. brass cap marked as shown.

from which an original bearing tree

A dead spruce, 6 ins. diam., bears N. 5 1/2° E., 167.1 ft. dist., with scribe marks T2S R13W S18 BT visible on blaze. (Record: N. 3°25' E., 167.6 ft.)

and new bearing trees

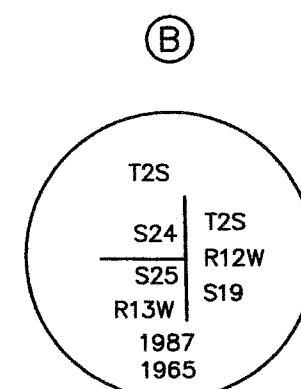
A spruce, 4 ins. diam., bears N. 10° E., 169.5 ft. dist., mkd. X BT.

A spruce, 4 ins. diam., bears S. 52 1/2° E., 115.9 ft. dist., mkd. X BT.

A spruce, 6 ins. diam., bears S. 13° W., 104.7 ft. dist., mkd. X BT.

A spruce, 8 ins. diam., bears N. 16° W., 155.1 ft. dist., mkd. T2S R14W S13 BT.

Add mks. 2008 to the cap.



Recovered an iron post 2 1/2 ins. diam., projecting 6 ins. above ground with a 3 1/4 in. brass cap marked as shown.

from which the remains of the original bearing trees

A dead spruce, 20 ins. diam., cut off 5 ft. above ground, stump bears N. 56° E., 29.8 ft. dist., with fully healed blaze. (1987 Record: N. 58° E.)

A dead spruce, 20 ins. diam., cut off 3 1/2 ft. above ground, stump bears S. 44 1/2° W., 39.6 ft. dist., with fully healed blaze.

A spruce stump, 14 ins. diam., bears N. 52 1/2° W., 26.4 ft. dist., with a fully healed blaze.

and new bearing trees

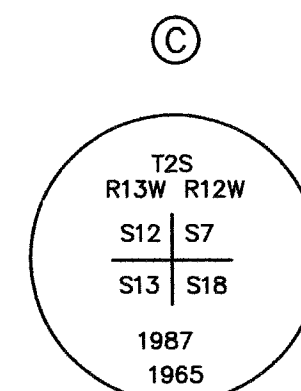
A spruce, 8 ins. diam., bears N. 71° E., 21.3 ft. dist., mkd. T2S R12W S19 BT.

A spruce, 7 ins. diam., bears S. 40° E., 60.3 ft. dist., mkd. X BT.

A spruce, 5 ins. diam., bears S. 57 1/2° W., 34.0 ft. dist., mkd. X BT.

A spruce, 5 ins. diam., bears N. 32 1/2° W., 34.1 ft. dist., mkd. X BT.

Add mks. 2008 to the cap.



Recovered an iron post 2 1/2 ins. diam., projecting 5 ins. above ground with a 3 1/4 in. brass cap marked as shown.

There is no evidence of the original bearing trees.

from which new bearing trees

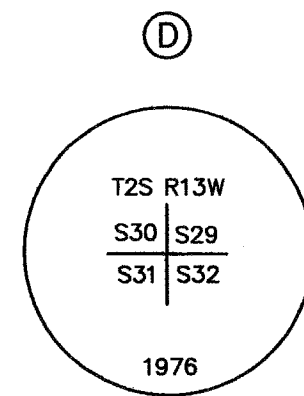
A spruce, 7 ins. diam., bears N. 47 1/2° E., 151.0 ft. dist., mkd. T2S R12W S7 BT.

A spruce, 5 ins. diam., bears S. 62° E., 122.4 ft. dist., mkd. X BT.

A spruce, 5 ins. diam., bears S. 5° W., 65.3 ft. dist., mkd. X BT.

A spruce, 5 ins. diam., bears N. 83 1/2° W., 80.6 ft. dist., mkd. X BT.

Add mks. 2008 to the cap.



Recovered an iron post 2 1/2 ins. diam., projecting 5 ins. above ground with a 3 1/4 in. brass cap marked as shown.

from which original bearing trees

A dead blown down birch, 18 ins. diam., stump bears N. 83° E., 17.6 ft. dist., with fully healed blaze. (Record: 19.1 ft.)

A rotten spruce, 18 ins. diam., cut off 4 ft. above ground, stump bears S. 5° E., 17.8 ft. dist., with marks T2S R13W S32 BT visible on partially healed blaze. (Record S. 2° E.)

A dead spruce, 13 ins. diam., bears S. 63 1/2° W., 40.8 ft. dist., with scribe marks visible on partially healed blaze. (Record: S. 64° W., 40.3 ft.)

A rotten spruce, 14 ins. diam., cut off 3 1/2 ft. above ground, stump bears N. 74° W., 16.8 ft. dist., with scribe marks visible on partially healed blaze. (Record: N. 73° W.)

and new accessories

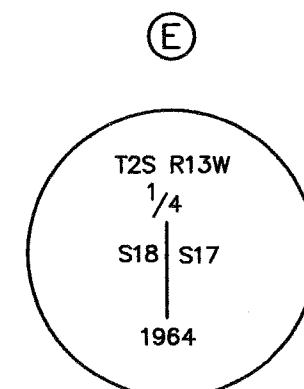
A spruce, 4 ins. diam., bears N. 67° E., 8.8 ft. dist., mkd. X BT.

A spruce, 6 ins. diam., bears S. 49° E., 39.5 ft. dist., mkd. T2S R13W S32 BT.

A spruce, 5 ins. diam., bears S. 31° W., 5.4 ft. dist., mkd. X BT.

A magnet in a fluorescent orange plastic case, bears N. 74° W., 9.9 ft. dist., buried 12 ins. below ground.

Add mks. 2008 to the cap.



Recovered an iron post 2 1/2 ins. diam., projecting 1 in. above ground with a 3 1/4 in. brass cap marked as shown.

from which the remains of an original bearing tree

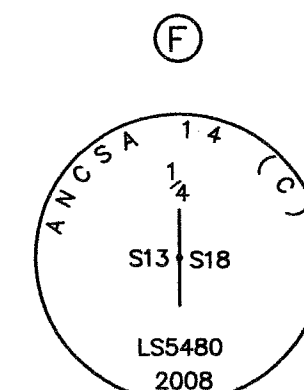
A dead spruce, 9 ins. diam., bears S. 42 1/4° E., 75.8 ft. dist., with marks 1/4 S17 BT visible on an open blaze. (Record: S. 43 1/2° E.)

and new bearing trees

A spruce, 5 ins. diam., bears S. 60 1/2° E., 78.3 ft. dist., mkd. 1/4 S17 BT.

A spruce, 8 ins. diam., bears S. 43 1/4° W., 240.0 ft. dist., mkd. 1/4 S18 BT.

Add mks. 2008 to the cap.



Recovered a concrete filled iron post, 1 in. diam., broken off at ground level, top 10 ins. of pipe with 2 1/2 in. brass cap attached found lying alongside, brass cap marked 1/4 S13 S18 1919.

There is no evidence of original bearing trees.

At the corner point,

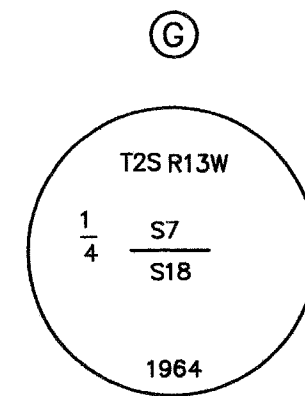
Set a stainless steel post 2 1/2 ins. diam., 28 ins. long, 26 ins. in the ground, with brass cap marked as shown. The top 10 ins. of the original monument with original brass cap attached buried inverted alongside the stainless steel post.

from which new accessories

A spruce, 14 ins. diam., bears S. 50° E., 20.5 ft. dist., mkd. 1/4 S18 BT.

A spruce, 7 ins. diam., bears S. 80 1/2° W., 15.8 ft. dist., mkd. 1/4 S13 BT.

Bury a clear magnet at the base of the stainless steel post.



Recovered an iron post 2 1/2 ins. diam., projecting 5 ins. above ground with a 3 1/4 in. brass cap marked as shown.

from which the remains of the original bearing trees

A dead, blown down spruce, 9 ins. diam., stump bears S. 43° W., 27.6 ft. dist., marks illegible on partially healed blaze. (Record: S. 36° W., 22.4 ft.)

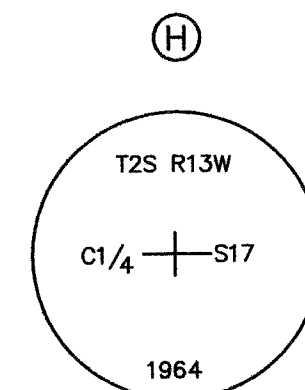
A dead, blown down spruce, 10 ins. diam., stump bears N. 40° W., 30.7 ft. dist., with marks 1/4 S7 BT visible on an open blaze. (Record: N. 42° W., 30.4 ft.)

and new accessories

A spruce, 6 ins. diam., bears N. 30° E., 72.7 ft. dist., mkd. X BT.

A spruce, 10 ins. diam., bears S. 23° E., 26.3 ft. dist., mkd. 1/4 S18 BT.

Add mks. 2008 to the cap.



Recovered an iron post 2 1/2 ins. diam., projecting 2 ins. above ground with a 3 1/4 in. brass cap marked as shown.

from which the remains of the original bearing trees

A dead, blown down spruce, 7 ins. diam., stump bears N. 23 1/2° E., 18.0 ft. dist., with marks C 1/4 S17 BT visible on an open blaze. (Record: N. 19° E., 18.5 ft.)

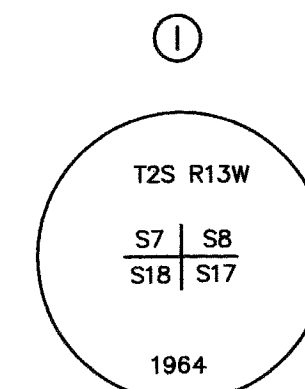
A dead, blown down spruce, 10 ins. diam., stump bears S. 5° W., 30.4 ft. dist., with illegible marks on partially healed blaze. (Record: S. 8° W.)

and new accessories

A spruce, 6 ins. diam., bears S. 65 3/4° E., 57.1 ft. dist., mkd. X BT.

A spruce, 8 ins. diam., bears S. 35 1/2° W., 46.0 ft. dist., mkd. C 1/4 S17 BT.

Add mks. 2008 to the cap.



Recovered an iron post 2 1/2 ins. diam., projecting 10 ins. above ground with a 3 1/4 in. brass cap marked as shown.

from which the remains of the original bearing trees

A dead, blown down spruce, 11 ins. diam., stump bears N. 50° E., 26.4 ft. dist., with marks R13W S8 visible on partially healed blaze.

A dead spruce, 16 ins. diam., bears S. 81 3/4° E., 42.0 ft. dist., with marks T S R W visible on partially healed blaze. (Record: S. 32° W.)

A spruce stump, 15 ins. diam., bears S. 33 1/4° W., 88.5 ft. dist., with marks BT visible on partially healed blaze. (Record: S. 32° W.)

A birch stump, 17 ins. diam., bears N. 58 1/2° W., 83.3 ft. dist., with marks T2S R13W S7 visible on partially healed blaze. (Record: N. 60° W.)

and new accessories

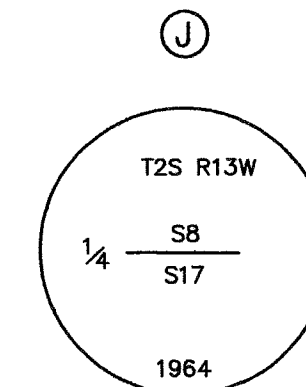
A spruce, 12 ins. diam., bears N. 53 1/4° E., 6.8 ft. dist., mkd. X BT.

A spruce, 10 ins. diam., bears S. 61 1/2° E., 92.3 ft. dist., mkd. T2S R13W S17 BT.

A spruce, 7 ins. diam., bears S. 41 3/4° W., 83.2 ft. dist., mkd. T2S R13W S18 BT.

A magnet in a fluorescent orange plastic case, bears N. 57 1/2° W., 39.6 ft. dist., buried 22 ins. below the ground.

Add mks. 2008 to the cap.



Recovered an iron post 2 1/2 ins. diam., projecting 3 ins. above ground with a 3 1/4 in. brass cap marked as shown.

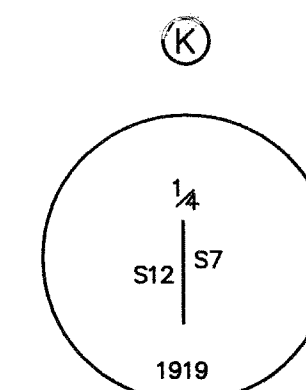
There is no evidence of original bearing trees.

from which new accessories

A spruce, 6 ins. diam., bears S. 29° W., 140.2 ft. dist., mkd. 1/4 S17 BT.

A spruce, 4 ins. diam., bears N. 41° W., 94.7 ft. dist., mkd. X BT.

Add mks. 2008 to the cap.



Recovered an iron post 1 in. diam., projecting 16 ins. above ground with a 2 1/2 in. brass cap marked as shown.

from which an original bearing tree

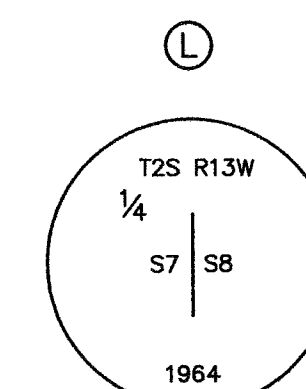
A spruce, 13 ins. diam., cut off 6 ft. above ground, stump bears S. 57 1/2° W., 41.8 ft. dist., with marks visible on partially healed blaze. (Record: S. 53 1/2° W., 40.3 ft.)

and new accessories

A spruce, 5 ins. diam., bears S. 13 1/2° E., 48.0 ft. dist., mkd. X BT.

A spruce, 7 ins. diam., bears N. 68 1/2° W., 47.1 ft. dist., mkd. 1/4 S12 BT.

Add mks. 2008 to the cap.



Recovered an iron post 2 1/2 ins. diam., projecting 18 ins. above ground with a 3 1/4 in. brass cap marked as shown. Reset post to now project 10 ins. above ground.

from which the remains of the original bearing trees

A rotten spruce stump, 12 ins. diam., bears N. 82° E., 12.1 ft. dist., with marks BT visible on partially healed blaze.

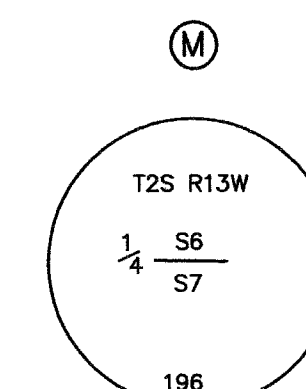
A rotten spruce, 10 ins. diam., cut off 3 ft. above ground, stump bears S. 80° W., 13.4 ft. dist., with no marks visible on fully healed blaze.

and new accessories

A spruce, 7 ins. diam., bears N. 54° E., 52.8 ft. dist., mkd. 1/4 S8 BT.

A spruce, 12 ins. diam., bears N. 85 1/2° W., 54.3 ft. dist., mkd. 1/4 S7 BT.

Add mks. 2008 to the cap.



Recovered an iron post 2 1/2 ins. diam., projecting 1 in. above ground with a 3 1/4 in. brass cap marked as shown.

There is no evidence of original bearing trees.

from which new accessories

A spruce, 6 ins. diam., bears N. 28° E., 42.7 ft. dist., mkd. 1/4 S6 BT.

A spruce, 5 ins. diam., bears S. 57 3/4° E., 110.3 ft. dist., mkd. X BT.

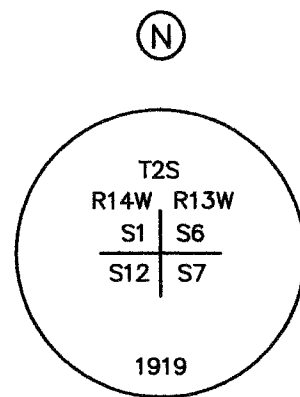
Add mks. 2008 to the cap.

ALASKA NATIVE CLAIMS SETTLEMENT ACT (ANCSA) SECTION 14(c), TRACTS A THROUGH I P.L. 92-203 (85 STAT. 688, 702, 703) NINILCHIK NATIVE ASSOCIATION, INC.

NINILCHIK, ALASKA

REFERENCE SHOULD BE MADE TO SHEET I FOR SURVEY INFORMATION

2010-37 Plat # HOMER Rec Dist 9-3 2010 Date 9/3/10 Time 2:09 PM



Recovered an iron post 2 ins. diam., projecting 1 in. above ground with a 3 1/4 in. brass cap marked as shown. There is no evidence of original bearing trees.

from which new accessories

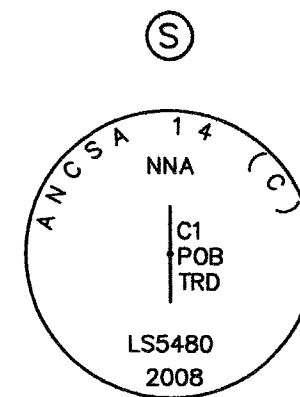
Powerpole No. 17020, bears N. 37 1/2° E., 46.1 ft. dist., with a 6 in. spike set in the southeast side of the pole, 14 ins. above ground.

A magnet in a fluorescent pink plastic case, bears S. 47 1/2° E., 6.6 ft. dist., buried 12 ins. below the ground.

A magnet in a fluorescent blue plastic case, bears S. 42 1/2° W., 5.3 ft. dist., buried 12 ins. below the ground.

A magnet in a fluorescent orange plastic case, bears N. 46° W., 9.9 ft. dist., buried 12 ins. below the ground.

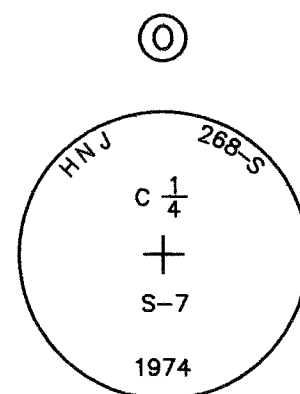
Add mks. 2008 to the cap.



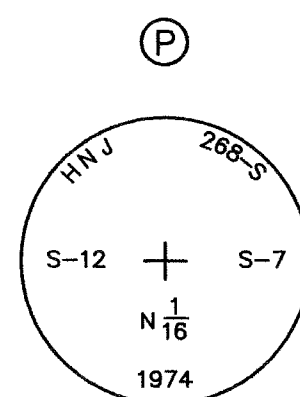
Recovered a 5/8 in. diam. rebar projecting 2 ins. above ground.

At the corner point,

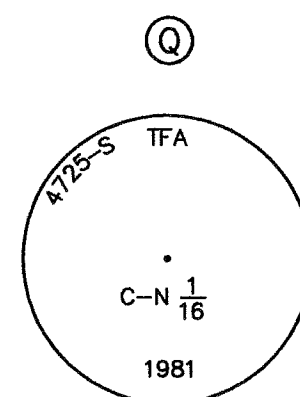
Set a 5/8 in. rebar, 30 ins. long, 29 ins. in the ground, with a 2 ins. aluminum cap marked as shown.



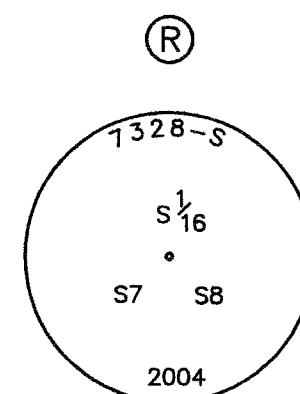
Recovered a 1 in. diam. iron pipe projecting 5 ins. above ground with a 2 1/2 in. brass cap marked as shown.



Recovered a 1 in. diam. iron pipe projecting 12 ins. above ground with a 2 1/2 in. brass cap marked as shown.



Recovered a 2 1/2 in. diam. aluminum post, projecting 1 in. above ground with a 3 1/4 in. aluminum cap marked as shown.



Recovered a 5/8 in. diam. rebar, projecting 3 ins. above ground, with a 2 1/2 in. diam. aluminum cap marked as shown, established by person(s) unknown. The position of the monument is in substantial agreement with other existing corners in the area, and is hereby accepted as the S 1/16 cor. of secs. 7 and 8.

HISTORY OF SURVEYS (CONTINUED FROM SHEET 2)

PRIVATE SURVEYS

NINILCHIK AIRPORT HEIGHTS, a subdivision plat of Government Lots 1 and 2, Section 7, Township 2 South, Range 13 West, Seward Meridian, Alaska, surveyed by Henning N. Johnson, Alaska Registered Land Surveyor No. 268-S in 1975 and recorded as Plat No. 75-27, Homer Recording District, Alaska.

NINILCHIK AIRPORT HEIGHTS 1977 ADDITION, a subdivision plat of part of Government Lot 1, Section 7, Township 2 South, Range 13 West, Seward Meridian, Alaska, surveyed by Henning N. Johnson, Alaska Registered Land Surveyor No. 268-S in 1977 and recorded as Plat No. 78-125, Homer Recording District, Alaska.

NINILCHIK AIRPORT HEIGHTS M. KEELER 1981 SUBDIVISION OF TRACT "A", a subdivision replat of Tract A, Ninilchik Airport Heights, 75-27, Homer Recording District, surveyed by Henning N. Johnson, Alaska Registered Land Surveyor No. 268-S in 1981, and recorded as Plat No. 82-3 Homer Recording District, Alaska.

NINILCHIK AIRPORT HEIGHTS CARTER TRACT-B DEED OF RECORD BOUNDARY SURVEY, a subdivision plat of part of Government Lot 1, Section 7, Township 2 South, Range 13 West, Seward Meridian, Alaska, surveyed by Henning N. Johnson, Alaska Registered Land Surveyor No. 268-S in 1983 and recorded as Plat No. 84-32BS Homer Recording District, Alaska.

ALMAS ACRES, a paper subdivision plat of part of the North half of Section 17, Township 2 South, Range 13 West, Seward Meridian, Alaska, prepared by Ted Forsi & Associates, Inc. in 1985 and certified by James A. Wilson, Alaska Registered Land Surveyor No. 4725-S in 1986 and Recorded as Plat No. 86-36 Homer Recording District, Alaska.

Record of Survey of Tract-I, Almas Acres, surveyed and certified by Roger W. Imhoff, Alaska Registered Land Surveyor No. 5780 in 1987 and recorded as Plat No. 87-39RS Homer Recording District, Alaska.

Record of Survey showing recovered positions of GLO and BLM Section Monuments of part of Sections 18 and 19, Township 2 South, Range 13 West, Seward Meridian, Alaska, surveyed and certified by Stephen C. Smith, Alaska Registered Land Surveyor No. LS-7538 in 1989 and recorded as Plat No. 89-14RS Homer Recording District, Alaska.

HISTORY OF SURVEYS (CONTINUED)

FISHHAVEN SUBDIVISION, a subdivision plat of part of the Southeast quarter of the Northwest quarter of Section 7, Township 2 South, Range 13 West, Seward Meridian, Alaska, surveyed by McLane Consulting Group in 1995, and sealed by M. Scott McLane, Alaska Registered Land Surveyor No. 4028-S and recorded as Plat No. 95-18 Homer Recording District, Alaska.

FISHHAVEN SUBDIVISION NUMBER TWO, a subdivision plat of part of the Northeast quarter of the Northwest quarter of Section 7, Township 2 South, Range 13 West, Seward Meridian, Alaska, surveyed by McLane Consulting Group in 1997, and sealed by M. Scott McLane, Alaska Registered Land Surveyor No. 4028-S and recorded as Plat No. 97-58 Homer Recording District, Alaska.

FISHHAVEN SUBDIVISION NUMBER 3, a subdivision plat of part of the Northeast quarter of the Northwest quarter of Section 7, Township 2 South, Range 13 West, Seward Meridian, Alaska, surveyed by McLane Consulting Group in 2004, and sealed by M. Scott McLane, Alaska Registered Land Surveyor No. 4028-S in 2004 and recorded as Plat No. 2004-16 Homer Recording District, Alaska.

FISHHAVEN SUBDIVISION NUMBER 4, a subdivision replat of part of Block 1 of Fishhaven Subdivision Number 2, 97-58, and Fishhaven Subdivision Number 3, 2004-16, Homer Recording District, surveyed by McLane Consulting Group in 2004, and sealed by M. Scott McLane, Alaska Registered Land Surveyor No. 4028-S in 2004 and recorded as Plat No. 2004-90 Homer Recording District, Alaska.

NINILCHIK AIRPORT HEIGHTS 2005 ADDITION, a subdivision plat of part of the West half (W 1/2) of Section 7, Township 2 South, Range 13 West, Seward Meridian, Alaska, lying south of Oil Well Rd, surveyed and certified by Roger W. Imhoff, Alaska Registered Land Surveyor No. LS-5780 in 2005 and recorded as Plat No. 2005-30 Homer Recording District, Alaska.

NINILCHIK AIRPORT HEIGHTS 2005 ADDITION NO. 2, a subdivision plat of part of the West half (W 1/2) of Section 7, Township 2 South, Range 13 West, Seward Meridian, Alaska, lying south of Oil Well Rd, surveyed and certified by Roger W. Imhoff, Alaska Registered Land Surveyor No. LS-5780 in 2005 and recorded as Plat No. 2006-11, Homer Recording District, Alaska.

Deed Descriptions

"Exhibit A to Warranty Deed", Book 123, Page 473, Homer Recording District, Alaska

A Permit, Avigation and Hazard Easement Right of Way conveyed from the Ninilchik Native Association, Incorporated to the State of Alaska, Department of Transportation and Public Facilities for a portion of the Ninilchik Airport, Book 130, Pages 300-305, Homer Recording District, Alaska

Homer 2010-37



United States Department of the Interior

BUREAU OF LAND MANAGEMENT
Alaska State Office
222 West Seventh Avenue, #13
Anchorage, Alaska 99513-7504
<http://www.blm.gov/ak>



In Reply Refer To:
NINILCHIK
ANCSA 14(c)
9600 (927)

August 31, 2010

HOMER
~~SELDovia~~ RECORDING DISTRICT
195 E. Bunnell Ave., Suite A
Homer, AK 99603

Dear District Recorder:

The Alaska Native Claims Settlement Act (ANCSA) Section 14(c) plat for Ninilchik Native Association, Inc. at Ninilchik, Tracts A through I, consisting of six (6) original sheets, transmitted to you by this letter of compliance, portrays a Cadastral Survey conducted to fulfill statutory requirements mandated by ANCSA, pursuant to Public Law 92-203 (Stat. 688, 702, 703), and satisfies the federal guidelines and requirements proclaimed for ANCSA 14(c) Surveys.

The plat represents surveyed parcels of land selected for ANCSA 14(c) reconveyances situated on portions of surface estate lands transferred from the United States of America by Patent Nos. 50-78-0053 and 50-91-0580, both to Ninilchik Native Association, Inc.

ANCSA 14(c) Surveys have been authorized as federally mandated surveys, under the provisions of Section 13 of ANCSA, 43 U.S.C. Stat. 1612. The authority to execute all federal land surveys in Alaska is delegated by the Secretary of the Interior to the Director, Bureau of Land Management (BLM) and subsequently redelegated to the Deputy State Director for Cadastral Survey, Alaska State Office. Accordingly, BLM requests that this plat be filed with the ~~SELDovia~~ RECORDING DISTRICT to comply with the federal platting regulations and the agreements set forth between the Bureau of Land Management and the State Recording Authority.

Sincerely,

Stephen B. Hamrick

Stephen B. Hamrick
Deputy State Director
for Cadastral Survey, Alaska